



COMMUNITIES FOUNDATION OF OKLAHOMA
~ Annual Report 2006 ~

Making Waves



Board of Trustees and Board of Governors

Trustees: Richard Ryerson (Chair) *Alva*; April Stobbe (Vice-Chair) *Shawnee*; Richard Dixon (Secretary) *Duncan*; Wes Stucky (Treasurer) *Ardmore*;

Malinda Berry Fischer *Stillwater*; Jenny Hendrick *Oklahoma City*; Monica McCasland *Duncan*; Jeannine Rainbolt *Oklahoma City*; Richard Ratcliffe *Weatherford*

Board of Governors: Ed Apple *Duncan*; Steve Beebe *Duncan*; Ron Beer *Stillwater*; David Boren *Norman*; Terrence Cooksey *Duncan*; Jimmy Cooper *Duncan*;

Nancy Ford *Shawnee*; Marseda Garrison *Elk City*; Mary Beth Glass *Newkirk*; Terry Graham *Cherokee*; Jean Harbison *Lawton*; Judge Robert Henry *Oklahoma City*;

James Howard *Tahlequah*; Bill Humphrey *Pauls Valley*; Craig Knutson *Norman*; Tom McCasland Jr. *Dallas, TX*; Melvin Moran *Seminole*; Gene Nelson *Duncan*;

State Senator Susan Paddack *Oklahoma City*; Steve Poag *Chickasha*; H.E. "Gene" Rainbolt *Oklahoma City*; Larry Roberts *Miami*; Jim Rodgers *Blackwell*;

Pam Treadwell *Muskogee*; Bruce VonTungeln *Weatherford*

Our History

1992 ~ Tom McCasland, Jr. and other community leaders started what would become Communities Foundation of Oklahoma in Duncan.

1999 ~ Gene Rainbolt, Oklahoma banker, joined McCasland to expand the concept creating the statewide Foundation.

2000 ~ CFO offices move to Oklahoma City.

2001 ~ Awarded the administration of the Oklahoma Educational Technology Trust & contracted with Foundation Management, Inc. for administrative services.

2003 ~ Established Women's Foundation of Oklahoma.

Our Year

Increased assets to \$20,786,995.

Awarded eight literacy grants from the Oklahoma Initiative Fund and 41 matching endowment grants.

Expanded to 17 community funds.

Administered funds for 82 scholarship recipients.

Added Advancement Director to management team.

Our Goals

To provide a convenient, efficient, and effective vehicle for donors to contribute to charitable concerns of their choice.

To encourage donors to create permanent funds that will benefit their communities both now and in the future.

To provide grants and support services to develop and strengthen community organizations.

To build permanent community resources through local community funds.

To promote community philanthropy and involvement.

COMMUNITIES FOUNDATION OF OKLAHOMA IS COMMITTED TO MEETING THE CHARITABLE NEEDS OF ALL OKLAHOMANS IN COMMUNITIES LARGE AND SMALL...

Community Funds

Alfalfa County Community Fund/Pioneer Spirit Foundation
Alva Community Fund
Blackwell Community Foundation Fund
Duncan Community Fund
Garber Foundation Community Fund
McAlester Community Fund
City of Miami, Oklahoma Community Fund
Norman Community Foundation
Share the Spirit Rogers County Community Fund
Seminole Community Events Fiscal Sponsorship Fund
Shawnee Community Foundation Fund
Smithville Community Fund
Stillwater Community Fund
Tahlequah Community Endowment Fund
Tishomingo Community Foundation Fiscal Sponsorship Fund
Weatherford Community Fund
Wewoka Community Fund

Types of Funds

Designated Endowment Funds~ created to provide permanent endowment for a specific non-profit or charitable activity

Fiscal Sponsorship Funds~ created for a specific project or purpose as a short-term fund and may be used if no 501(c)(3) exists for an organization

Donor Advised Funds ~ created when a donor would prefer more input into annual distribution and would like to distribute funds to any number of charitable concerns each year

Scholarship Funds ~ designated for awarding scholarship dollars to students selected by a committee representing fund advisors or the CFO grants committee

Field of Interest Funds ~ allows donors to target gifts to causes important to them through grants in their specific interest area

Unrestricted Funds ~ addresses a broad range of current and future needs across the state as determined by the Foundation

Escrow Funds ~ established when a donor wishes to place funds with the Foundation without immediately designating a specific charity or purpose





The Women's Foundation of Oklahoma was established in 2003 with a challenge grant from Chambers Family Fund to Communities Foundation of Oklahoma with a priority to build a permanent resource for women & girls in Oklahoma. WFO makes grants and funds systems change impacting the economic self-sufficiency of women and the future of girls.

Improving the Lives of Women & Girls

- ~ Conducted a statewide needs assessment including an overview of the status of women and girls in 2003
- ~ Established an advisory board of women from across the state in 2004
- ~ Provided funding to the Institute of Women's Policy Research in 2004 resulting in the Status of Women in Oklahoma report
- ~ Received donations totaling over \$500,000
- ~ Awarded over \$98,500 in grants

Advisory Board

Joe Anna Hibler (Chair) *Weatherford*;
Merle Chambers *Denver, CO*; **Kathie Coyle**
Tulsa; **Sandy Ingraham** *Lincoln County*;
Melinda Johnson *Durant*; **Hilary Kitz** *Tulsa*;
Prudence Little *Madill*; **Anne Morgan** *Norman*;
Marilyn Murrell *Arcadia*; **Sharon Neuwald**
Oklahoma City; **Claudia San Pedro** *Oklahoma City*

www.wfok.org

2006 Grantees

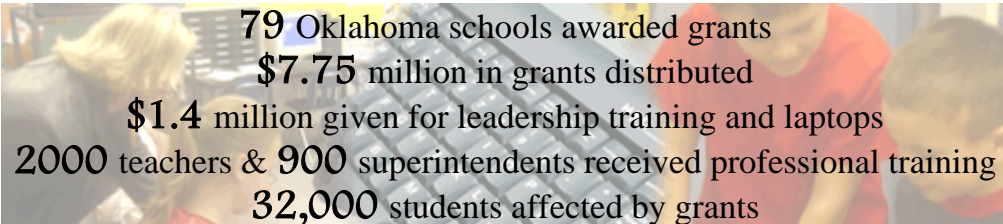
Girl Scouts of Magic Empire Council
Housing Partners of Tulsa
Langston University
Oklahoma Native American Legal Resource Center
Norman Alcohol Information Center
Northwest Domestic Crisis Services
Oklahoma Council on Economic Education
Wichita Mountains Prevention Network



Established in 2001 with a \$30 million contribution from AT&T Oklahoma as a result of an agreement between Attorney General Drew Edmondson and AT&T Oklahoma, the Oklahoma Educational Technology Trust equips Oklahoma public schools with the technology and technological skills necessary to compete in the global marketplace. Through technology development at the University of Oklahoma's K20 Center, students, faculty, and staff across the state are integrating technology into the classroom creating widespread waves of change.

The Oklahoma Educational Technology Trust does not just put computers in schools. Computers do little good if teachers and students don't know how to use them. The Trust is unique in that we train educators to incorporate technology into the everyday classroom experience. The goal is to enhance the learning experiences of Oklahoma children. ~ Attorney General Drew Edmondson

~ Since 2003 ~



79 Oklahoma schools awarded grants
\$7.75 million in grants distributed
\$1.4 million given for leadership training and laptops
2000 teachers & 900 superintendents received professional training
32,000 students affected by grants

81% larger increase in Academic Performance Index scores at OETT schools

For every \$1 spent on technology, an additional 50¢ went toward professional development

Board of Trustees

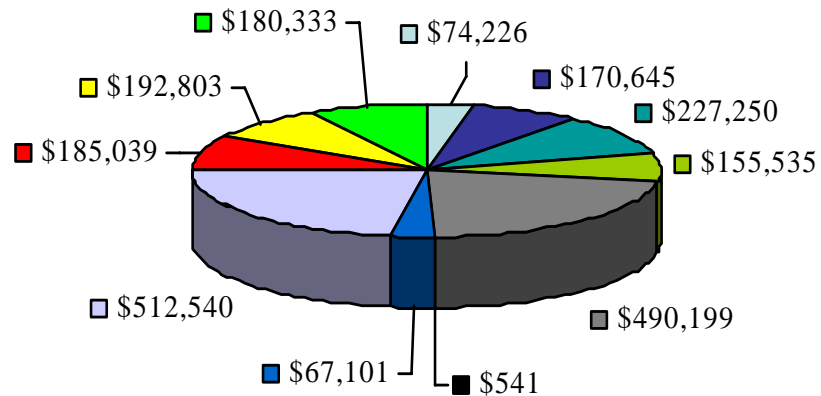
Bob Stafford (Chair) *AT&T*;
Keith Ballard *Oklahoma State School Boards Assn.*;
Phil Berkenbile *Oklahoma Department of Career & Technology Education*;
Lela Odom *Oklahoma Education Association*;
State Senator Susan Paddack;
Randall Raburn *Cooperative Council for Oklahoma School Administration*;
State Representative John Wright

2006 Grantees

Alcott Middle School *Norman*; **Bridge Creek School District**;
Byng Elementary School; **Crescent High School**;
Deer Creek Elementary School; **Drumright High School**;
El Reno Alternative Academy; **Grissom Elementary School** *Tulsa*; **Idabel High School**; **Irving Middle School** *Norman*; **Laverne Elementary School**; **Tryon Junior High School** *Perkins*; **Tuttle High School**;
Vanoss 6th—9th grades; **Wagoner Central Intermediate School**; **Western Oaks Middle School** *Putnam City*;
Westville Lower Elementary School

Financials as of June 30, 2006

Grants & Distributions



Animal Welfare	Art, Culture & Humanities
Children & Youth	Community & Public Affairs
Education & Scholarships	Environment
Faith Based	Health
Human Services	Other
Women	

TOTAL \$2,256,217

Statement of Financial Position

ASSETS	JUNE 30, 2006
Assets in Checking/Money Market	\$ 3,332,695
Prepaid Expenses	\$ 7,550
Balanced Pool (70% equities)	\$ 14,005,670
Growth Pool (80% equities)	\$ 273,501
Aggressive Pool (100% equities)	\$ 237,370
Non-pooled Investments	\$ 311,773
Pledges & Accounts Receivable	\$ 2,618,437

Total Assets	\$ 20,786,995
---------------------	----------------------

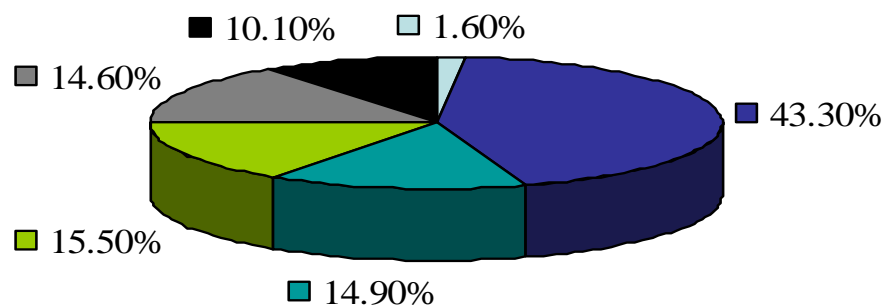
LIABILITIES & NET ASSETS

Total Grants & Accounts Payable	\$ 767,796
Net Assets & Agency Transfers	\$ 20,019,199

Total Liabilities & Net Assets	\$ 20,786,995
---	----------------------

Investment Report ~ Balanced Pool as of June 30, 2006

Current Allocation



■ Cash Equivalents	■ Fixed Income	■ Large-Cap Growth
■ Large-Cap Value	■ Small-Cap Value	■ International Equity

Additional information on individual investment managers, portfolio performance on individual investment pools, and investment fees are available upon request.

Performance

	Year ending June 30, 2006	Trailing 12 months ending June 30, 2006	Three Years ending June 30, 2006
Portfolio	3.5%	8.4%	8.8%
Benchmark: S&P 500 Index/ LB Int. Agency Index	1.7%	5.0%	6.9%



COMMUNITIES FOUNDATION OF OKLAHOMA

2932 NW 122nd, Suite D ~ Oklahoma City, Oklahoma ~ 73120
405/488.1450 ~ Toll-free 877/689.7726 ~ Fax 405/755.0938
www.cfok.org

Management Team:

Frank Merrick, President, Foundation Management, Inc. ~ Susan R. Graves, Executive Director ~ Katherine Ray, CPA ~ Amy Klinge, Advancement Director ~ Amanda Williams, Administrative Assistant ~ Ann Hopkins, Financial Assistant