



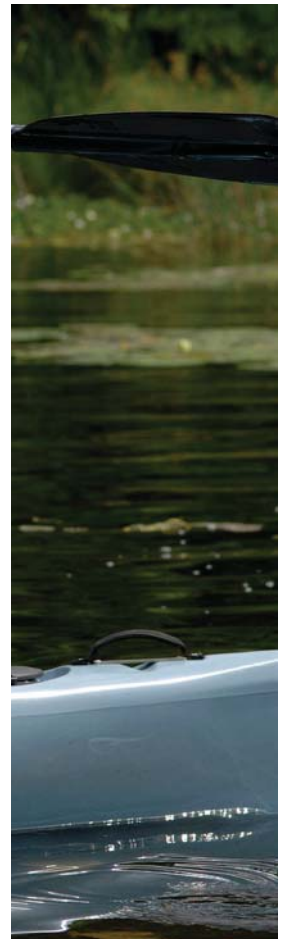
**Four County**

---

community foundation <sup>SM</sup>

---

*2005 Annual Report*



For **good.** For ever.®

Connecting Lapeer, Macomb, Oakland and St. Clair Counties

## ***Contents***

The President's Message	1
New 2005 Funds	2
FCCF Funds List	5
Financial Statements	6
2005 Grants	7
2005 Donor List	10

## ***On the Cover***

**V**isual challenges don't hold these campers down. This V is for Victory. Students participate in outdoor sport at the Lion's Bear Lake Camp.

## **Youth Advisory Committee**

### Officers

President, Shane Sinda  
Vice-Pres., Alissa Campbell  
Treasurer, Alex Russell  
Secretary, Lindsay Ligon  
Historian, Beth Bodiya

### Members

Rachel Beaupre  
Brandon Beaupre  
Shelby Couch  
Michael Gonczar  
Jake Hoover  
Wes Jonik  
Jon LaFata  
Jaime Ligon  
Amy Martin  
Alex Reinhardt  
Taylor Sinda  
Ryan Spencer  
Brooke Taylor  
Stephanie Walla

## BOARD OF TRUSTEES

President:  
Charles Schiedegger

Vice-President:  
Joseph Salas

Secretary:  
Kim M. Jorgensen

Treasurer:  
Barbara Quain

### TRUSTEES

Judy Czerepowicz  
William R. Duggan, Jr.  
Tim Edwards  
Katherine Eschenburg  
Schaeffer Greene  
Henry Malburg  
Hank Nichols  
Sean O'Bryan  
Brenda K. Pinsky  
Laura Schapman  
Barbara Stremler  
Al Verlinde  
Shane Sinda (Youth)

### EMERITUS BOARD

David Bishop  
John Bishop  
Patricia Brozowski  
Bonnie Ligon Dickens  
Shane Diehl  
Hal Hooks  
James T. Ligon, Jr.  
James Ligon, Sr.  
Kathlynn A. Markel  
James Ottevaere  
Edmund L. Risch  
Jim Sillers

### STAFF

Executive Director:  
Janet S. Bauer

Admin. Asst./Accountant:  
Christine Gabridge

Program Associate:  
Valerie Quinn

## *The President's Message*

The Four County Community Foundation continues to grow and support the six surrounding communities. At the beginning of 2006, our assets have passed the 9.5 million dollar mark and we fully expect to break 10 million this year. When I joined the Board in 1999 our goal was to reach the 6 million dollar mark and in just six years it is approaching 10 million.



The Four County Community Foundation issued 295 grants in 2005 totaling \$330,000 distributed for seniors, youth, environmental enhancements, the arts, community projects and scholarships. Since the beginning of the Foundation in 1987 it has given in excess of 4 million dollars to the local communities.

In March of 2006, the Four County Community Foundation achieved compliance with National Standards for U.S. Community Foundations. These standards assist community foundations in establishing legal, ethical and effective operating practices. Five hundred community foundations across the country are participating in this process.

We have a very dedicated Board of Directors and a very professional and capable staff, who work very hard in supporting our mission.

We continue with our mission: **For good. For ever.**

Charles Schiedegger,  
FCCF Board President

# *New 2005 Funds*

## *Imlay City Historical Commission Endowment Fund*

The Imlay City Historical Commission was established in 1969 in preparation for Imlay City's centennial celebration. The Commission's original purpose was to plan and carry out activities recognizing the 100<sup>th</sup> anniversary of the city. That event in 1970 proved to be a great success and generated a tremendous sense of community pride and "coming together for a common cause" by area residents.



*Pullman cars on display at the Imlay City Historical Commission.*

The Commission stayed intact, and in 1978, officials of the Grand Trunk Railroad decided that the City of Imlay City could lease the land for a period of 99 years. The City subleases the facility to the Historical Commission. Work began immediately to renovate the facility and secure donations of artifacts that were significant to the community and its residents. That sense of "coming together for a common cause," once again revealed itself through the efforts of residents to establish and open the museum. Nearly all of the artifacts on display have been donated or loaned by community residents.

In 1979, a railcar was placed on tracks located near the depot and eight years later a caboose was placed on tracks behind the railcar. The Imlay City Downtown Development Authority has recently undertaken an energetic "Main Street Program," which will revitalize the downtown district, while preserving the historic tradition and style of the village. The DDA theme is "Imlay City Historic Depot District" and the museum is becoming a major attraction in the area. The museum has recently received The County Press Reader's Choice Award as the "Best Local Museum" in Lapeer County.



*Display of Dr. G. C. Bishop's office.*

Our mission is to "operate a museum and bring together those people interested in history, especially the history of Imlay City and its surrounding community; since understanding the history of our community is basic to our democratic way of life, gives us a better understanding of our state and nation, and promotes a better appreciation of our American heritage."

To this end the Board of Directors has been seeking ways to diversify its source of operational revenue. Currently, monies are provided through membership dues, donations, corporate sponsorships, and fundraisers. The Imlay City Historical Commission Endowment Fund will ensure that operating funds are available well into the future to maintain this local treasure for children and adults alike.

***St. Clement of Rome Church  
& Knights of Columbus # 7018 College Fund***

A college scholarship fund has been established for Romeo High School students who attend either St. Clement of Rome or St. John and Paul Catholic Churches and live in the school district. The scholarships reward those good and faithful students who regularly attend Mass and are in need of financial assistance to pursue higher education. The first awards were made to six 2006 graduates of Romeo High School.

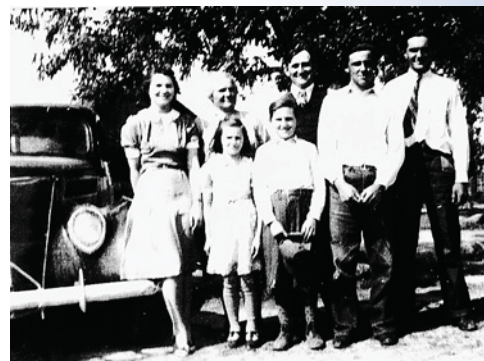
The initial benefactor established the fund in memory of Edward and Lillian Rumph. Edward and Lillian moved to Romeo Plank Road in 1926 with their children. The family became the sixth registered family of the church which would become St. Clement of Rome. Lillian was a member of the Altar Society and contributed her cooking skills at church picnics. Edward served as an usher and was a member of the Knights of Columbus.

The family survived the Great Depression, saving the family farm. They gave of themselves within the farming community by returning kindnesses shown to them to others who were also struggling through hard financial times.

The fund is dedicated to assisting students in pursuing higher education. All parishioners of St. Clements of Rome and St. John and Paul Catholic Churches are encouraged to support the education of the youth of their parishes. This fund will forever benefit these students.



*Lillian and Edward Rumph, 1919.*



*The Rumph family, 1939.*

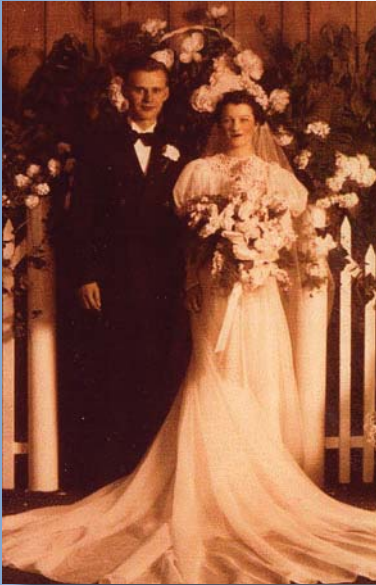
***Knights of Columbus # 7018 Roman Catholic Scholarship Fund***

The Knights of Columbus Council # 7018 in Romeo, created a scholarship to provide financial assistance to students who attend mass regularly at St. Clement of Rome or St. John and Paul Catholic Churches, demonstrate financial need and meet other criteria. The scholarships are for students who are pursuing a Catholic education for grades K – 12<sup>th</sup> or for the seminary. The Knights of Columbus encourage parishioners to support education of its student members.



# *New 2005 Funds*

## *John R. & Iris M. Bartholomew Scholarship*



*John and Iris Bartholomew  
wedding, 1939.*

Iris Mae Bartholomew was a lifelong resident of Romeo. She graduated from Romeo High School in 1931 and worked as a bookkeeper until her marriage. John Ross Bartholomew was born in Gladwin, Michigan and was raised in Detroit. He graduated from Northwestern High School. He lived in Detroit until his marriage to Iris in 1939. John and Iris built a home at 187 Turner Street in Romeo where they resided until their deaths. They were both members of the First Congregational Church. They raised four children: Polly, Barb, John and Mike. John was a member of Rotary and a trustee and president of the Community Hospital in Romeo.

John and Iris were devoted and loving parents. They stressed responsibility, strong moral values, family loyalty and the importance of an education. They both were unable to attend college because finances were unavailable due to the Great Depression. John was enrolled at the University of Detroit but was unable to attend. He aspired to be an architect. Iris was interested in a nursing career. It was their dream that their children would have the opportunity to



*The Bartholomew siblings: (left to right)  
Polly, Barb, John and Mike.*

attend college and pursue a professional career. They worked hard to achieve this goal. It is with pride that the Bartholomew family has established this scholarship in memory of John and Iris to help a student at Romeo High achieve his or her goal to further their education.



*The Waterloo Hunt Club presents a  
check to the Grass Lake Equestrian  
Team.*

## *Waterloo Hunt Club Donor Advised Fund*

The Waterloo Hunt Club established a donor advised fund in 2005 to provide support for activities which the club members wished to promote. The first grant issued from the fund was to the Grass Lake Community Schools to support the Grass Lake Equestrian Team.

# FCCF Funds List

☞ **New 2005 funds are bolded.** ☞

## UNRESTRICTED ENDOWMENT

Four County Community

## ADMINISTRATIVE

Friends Operations  
Operating

## CAPITAL CAMPAIGN & NON-ENDOWED FUNDS

Capac Adolescents Preventing Abuse & Crime  
Friends of the Romeo District Library  
Family Literacy Center of Lapeer County  
North Macomb Soccer Club Field Development  
President's Advised  
Romeo/Washington/Bruce Skate Park  
Sillers Family Charitable

## DESIGNATED AGENCY FUNDS

Roland W. Graubner Endowment for the Romeo Library  
**Imlay City Historical Commission**  
Romeo Historical Society/Charles E. Keller  
Symphonia Chorale Endowment

## DONOR ADVISED FUNDS

### **John R. & Iris M. Bartholomew Scholarship**

Andy Beam Memorial  
Justin C. "Jut" Bullock Memorial Scholarship  
Darin Conrad Education  
Joseph & Bertha Corrion Charitable Fund  
Robert Wayne Creger Sr. Memorial  
Cryderman-Hebblewhite Agriculture  
Gualdoni Family Education Scholarship  
Hilda M. Hill Memorial Scholarship  
Imlay Area Christian Community  
Imlay City Schools Alumni Association  
Lawrence & Rose Juip Memorial

### **K of C Council #7018 Roman Catholic Fund**

Ligon Brothers  
Marshall Lock Memorial  
Ottevaere Safe Horsemanship Program  
Karras Pelfrey Memorial Scholarship  
Gail Rickard Foundation

### **St. Clement Church & K of C #7018 College Fund**

Jean Currey Stanwood Memorial  
Dr. Bernard J. Stremmer Memorial Fund  
Floyd W. West Memorial Scholarship

### **Waterloo Hunt Club**

## FIELD OF INTEREST FUNDS

21st Century Education  
Almont Area  
Armada Area  
Capac Area  
Dryden Area  
Imlay City  
Romeo Area

Almont Education & Community  
Armada Educational Foundation  
Capac Educational Endowment  
FCCF Home  
Healthy Seniors/Healthy Youth  
Imlay City Educational Endowment  
Grettenberger  
Alvin Norlin  
Schonfeld  
Glenn L. Smith II Memorial  
Lee Weyer Athletic  
Richard P. Wheeler  
W. K. Kellogg Youth  
Lapeer Regional Hospital Endowment  
Murdie Educational  
Rhonda Nugent Memorial  
Richmond Athletic Club Endowment  
Romeo Community Action  
Harold Tietz Memorial Fund for Cancer  
Lloyd Veitch  
Waste Management Environmental  
Loral Watson Memorial Endowment  
Woods-N-Water News Outdoor Foundation

## SCHOLARSHIP FUNDS

ACTA/Ruth Isaacson Memorial  
Nancy B. Barr Adult Education  
Capac Athletic Booster Endowment  
Capac Educational Scholarship  
Harry Bussell  
Marion Fischer  
Laurie Lee Memorial Scholarship  
Russell W. Ligon Memorial Engineering  
William & Betty Morrison Memorial  
James E. Neely Scholarship  
North Macomb Soccer Club Scholarship  
Romeo Community Schools  
American Legion  
Dan Barnabo  
David Brockman  
Ralph Dietz  
Steven Fritz Sr. Memorial/Kiwanis  
Ellis C. Haskell  
Haskell Trust  
Jahn  
Al Moran  
Eldon Mueller Memorial  
David L. Olson/Rotary Club  
Romeo Boosters Club  
Sisson  
Starkweather/Garvin Art & Drafting  
George S. Souten Performing Arts Scholarship  
Vera Souten Medical Field Scholarship  
Xi Gamma Rho of Beta Sigma Phi

# Financial Statements

## STATEMENT OF ACTIVITIES AND CHANGES IN NET ASSETS FOR THE YEAR ENDED DECEMBER 31, 2005

	Unrestricted	Temporarily Restricted	Total
<b>Revenues and Support</b>			
Investment earnings	\$ 72,236	\$ 114,884	\$ 187,120
Donations	7,393	171,917	179,310
Special events revenue	-	17,601	17,601
Total revenues and support	<u>79,629</u>	<u>304,402</u>	<u>384,031</u>
<b>Expenses</b>			
Grants	329,983	-	329,983
Administrative & fundraising			
Wages, payroll taxes & Personnel benefits	95,793	-	95,793
Administrative	32,759	-	32,759
Occupancy	16,603	-	16,603
Development	15,258	-	15,258
Fundraising & other expenses	6,035	-	6,035
Board development	1,251	-	1,251
Total expenses	<u>497,682</u>	<u>-</u>	<u>497,682</u>
<b>Release of Net Assets From Restrictions</b>	<u>278,472</u>	<u>(278,472)</u>	<u>-</u>
<b>Changes in Net Assets From Operations</b>	<u>(139,581)</u>	<u>25,930</u>	<u>(113,651)</u>
<b>Net Unrealized Gain on Marketable Securities</b>	<u>128,137</u>	<u>194,352</u>	<u>322,489</u>
<b>Changes in Net Assets</b>	<u>(11,444)</u>	<u>220,282</u>	<u>208,838</u>
<b>Net Assets – January 1, 2005</b>	<u>3,507,516</u>	<u>5,807,206</u>	<u>9,314,722</u>
<b>Net Assets – December 31, 2005</b>	<u>\$3,496,072</u>	<u>\$6,027,488</u>	<u>\$9,523,560</u>

## STATEMENT OF FINANCIAL POSITION DECEMBER 31, 2005

### ASSETS

<b>Assets</b>	
Cash and cash equivalents	\$1,057,149
Investment securities	8,327,720
Real estate, less accumulated depreciation of \$21,545	<u>178,455</u>
Total Assets	<u>\$9,563,324</u>

### LIABILITIES AND NET ASSETS

<b>Liabilities</b>	
Grants payable	\$ 34,850
Accrued expenses	4,914
<b>Net Assets</b>	
Unrestricted	3,496,072
Temporarily restricted	<u>6,027,488</u>
Total Net Assets	<u>9,523,560</u>
Total Liabilities and net assets	<u>\$9,563,324</u>

**PUBLIC NOTICE:** Our annual audit and IRS 990 are on file for review at the Foundation office during normal business hours. Copies of either document are available for a nominal fee. Names of investment managers, fees charges, and names of Four County Community Foundation Trustees responsible for investment and oversight of assets are available upon request.



# A Sample of Our Grants

## *Bear Lake Camp*

**B**ear Lake Camp was the site of two programs which were supported by the Foundation. The Foundation's Healthy Seniors/Health Youth Fund supported tuition for summer camp for visually or hearing impaired children. The camp is fully handicapped accessible and provides an educational and recreational experience for the youth, resulting in increased confidence and self esteem. Lions Clubs of Michigan operates the camp.

A second grant, from the Woods-N-Water News \Outdoor Foundation, provided physically challenged adults with an opportunity to hunt. Hunters and their guides spent an October weekend enjoying the outdoors, hunting on private land and staying in an accessible facility. The event was organized by the Wheelin Team 457, a unique air-rifle team sponsored by the North Branch American Legion Post 457. The Woods-N-Water News Outdoor Foundation is dedicated to preserving the outdoor traditions of Michigan.



## *Concerts: A Sense of Community*

**A**lmont's Concerts in the Park continues to create a place for the community to keep in touch through the summer months. Increasing attendance attests to the program's value. Because of its success in the previous two years, two new programs were added to this year's agenda. Monday is host to Kids in the Park with programs and activities at noon and Teen Night on Friday nights which held nine concerts in its first year in addition to the Thursday night concerts.



## *Through Teen Eyes – Film Projects With a Message*

**M**acomb Academy of Arts and Sciences has received two grants for purchase of equipment for a tenth grade student project to produce documentary films. Students are involved with a group to design, edit and produce a five minute documentary. They will learn streaming video techniques and will use FLASH technology. The films were produced entirely by the students. The students worked under the tutelage of Norm Fankell, an Emmy award-winning film producer, who was an Artist in Residence and gave instruction in film production. Topics of the films were of high interest to teenagers, including such subjects as: destructive decisions, safety, driving issues, substance abuse and empathy for others. A viewing of the films is conducted each year with students, parents and other interested parties in attendance. The films are produced in DVD and VHS formats and will run on Channel 6 public access television.



# A Sample of Our Grants

## *Kingsbury Environmental Institute*

Kingsbury School provided a series of three lectures thanks to funding from the Foundation. The mission of the Institute is to enhance and support community understanding of the environment through education, research and active involvement in stewardship.



The first event was “Joe Rogers and Friends” and featured a focus on natural history of birds of prey as well as the problems these birds face today. Live birds of prey that have been injured and rescued are a lively part of the presentation. The Wildlife Recovery Association has helped hundreds of orphaned and injured animals return to their natural habitat.



The second lecture was “Building ‘green’ now for a Sustainable Future”. Elizabeth Sullivan from the Kresge Foundation shared the experience of constructing a “green” building at the Foundation’s Troy headquarters. The project was an environmentally sustainable expansion to their historic office site.

The third program in the series was “Wildflowers and Native Michigan Plants”. Sylvia Taylor, PhD. shared her extensive knowledge of wildflowers and native Michigan plants. Preceding the discussion was a walking tour of Kingsbury’s grounds and trails with Naturalist Anne Sousanis. The Foundation is pleased to announce they have recently funded a second series of environmental lectures to take place during the 2006/2007 school year.

## *Youth Development: Community and Athletics*

The Foundation, as well as many other community groups, supported Dryden’s Hometown Baseball organization’s request to improve three **Cardinal Baseball Fields**. No more rocks on these fields to injure a knee. Plans include diamond dust, bleachers and new wiring for the pavilion.



With support from grants, **Imlay City’s American Youth Soccer Organization (AYSO)**, Region 1287, is working to develop 26 acres into 14 soccer fields located at Blacks Corners Road. More than 750 youth ages 4 through 18 will benefit from these fields serving students from Imlay City, Dryden and Almont. In addition to general grant support for this project, the Youth Advisory Committee generated proactive support addressing the need to fund youth recreation options in our communities as repeatedly reported by their Needs Assessment Surveys.

What would a football game be without hearing those plays? The Justin C. “Jut” Bullock Memorial Scholarship Fund supported the **Capac Athletic Boosters** with a much needed PA system. It will also serve for other athletic field events.

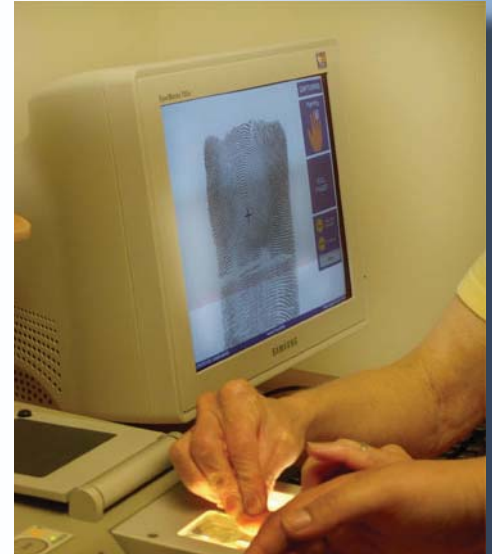
## *Supporting Safety*

Safety comes in many forms. In past years the Foundation has supported its communities with rescue equipment such as the jaws of life, a rescue van, and thermal imaging cameras. This year community safety needs were again answered.

It was when the state mandated electronic fingerprinting—without resources—that, Chief Eugene H. Bruns, of the **Almont Police Department**, appealed to the Foundation. Our grant served as the matching fund to obtain additional funding from the state. Without our community support, our police would still be driving to Lapeer to borrow its system at considerable time and expense. The system is shared with Dryden, Metamora, Capac and Imlay City.

**Mussey Township Fire Department** was supported by the Foundation in their needs to replace an obsolete defibrillator. The new defibrillator model was specifically selected for its ability to be used on pediatric patients as well as adults. Refresher courses are open to the community and are scheduled throughout the year.

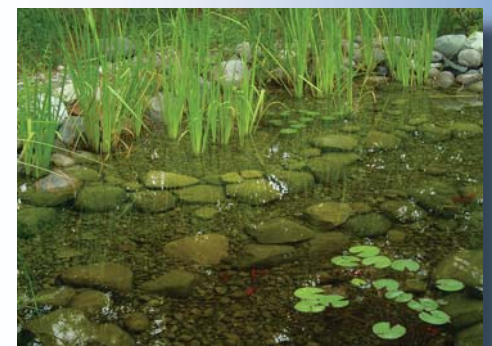
**Dryden Township Police Department** purchased defibrillators to outfit each of its patrol cars to insure quicker response-time, essential in saving lives at accident scenes and emergency health situations.



## *Water Garden Project*

Romeo High School students participated in a unique multi-disciplinary project to design, instruct and maintain a 900 square foot pond which includes a water garden environment. A grant from the Foundation provided for the purchase of flats of Michigan native perennial wild flowers and plants.

The pond is located in the courtyard of the school. Students worked with local landscape professionals in construction, writers will create poetic pieces about the site, artists will create images of the fauna and wildlife that are present in the garden and science classes will learn about the ecology of a wetland environment. Experiments will include water quality, study of insects that the water garden draws, and a study of the various wetland plants. The new water garden will provide years of lessons and enjoyment by students and faculty alike.





**Four County**  
**community foundation™**

**FOUR COUNTY COMMUNITY FOUNDATION... For good. For ever.**

### **Mission Statement**

Four County Community Foundation is committed to serving the current and emerging needs of our local community, continuing the tradition of philanthropy begun generations ago. The Foundation is dedicated to bringing together human and financial resources to support progressive ideas in education, health, community, youth and adult programs. The Foundation provides a secure, flexible vehicle for individuals, families, foundations and organizations to positively impact the quality of life in our community. The Foundation recognizes that in order to meet its commitments to the community it serves it must seek growth through its permanent endowment funds from a wide range of donors.

### **Legacy Society Members**

Janet Bauer  
John & Connie Brzozowski  
Marion & Robert Fischer  
Paul & Elsie Hinzmann  
Ella Mae & Gertrude Murdie  
Catherine & Dorothy Ondersma  
Dr. James & Ann Sillers  
Bernard Stremmer, M.D.

We gratefully recognize those who ensure a legacy to the Foundation by means of deferred gifts.

This special group of people is an encouragement to others to remember Four County Community Foundation in their charitable plans.

### **Advisor's Circle**

Professional advisors who have helped work on a major gift with their clients are recognized as members of Four County Community Foundation's Advisor's Circle. Advisors with a number after their name have worked on multiple gifts.

*We thank you* on behalf of our communities.

Shane Diehl  
Sebastian V. Grassi  
Cynthia Lane  
Ed Lynch, 2  
Henry Malburg, 2  
Ronald W. Rickard, 2

Four County Community Foundation \* 231 E. St. Clair, P. O. Box 539 \* Almont, MI 48003  
Telephone: (810) 798-0909 \* Fax: (810) 798-0908 \* Email: [info@4ccf.org](mailto:info@4ccf.org) \* Website: [www.4ccf.org](http://www.4ccf.org)



**For good. For ever.®**