

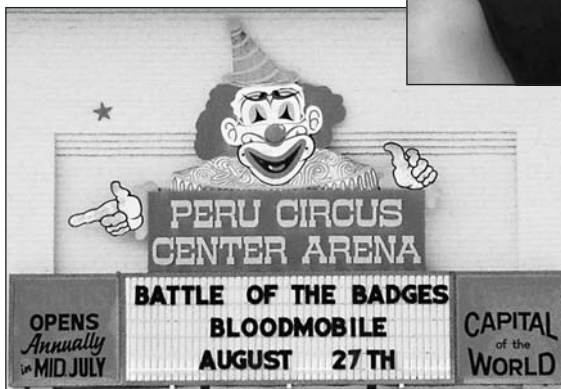
Northern Indiana Community Foundation, Inc.

2003 Annual Report

Forever

U
L
T
O
N
I
M
A
I
N
I
M
A
N
A
G
I
N
G
S
T
E
W
A
R
D
S
H
I
P

...in the counties we serve



Northern Indiana Community Foundation, Inc.

2003 Annual Report

TABLE OF CONTENTS

	Page
Mission _____	3
Board of Directors _____	4
President's Letter _____	5
Special Events _____	6
Special People _____	7
Community Leadership _____	8
Donor Opportunities _____	9
Foundation Funds of Fulton County _____	10
Foundation Funds of Miami County _____	13
Foundation Funds of Starke County _____	15
2003 Grants _____	17
Unrestricted Grants Fulton County _____	18
Unrestricted Grants Starke County _____	19
Fulton County Designated-Donor Advised _____	20
Miami County Designated-Donor Advised _____	21
Starke County Designated-Donor Advised _____	21
Lilly Endowment Community Scholars _____	22
Fulton County Scholarship Awards _____	23
Miami County Scholarship Awards _____	25
Starke County Scholarship Awards _____	25
Fulton County Donors _____	26
Miami County Donors _____	28
Starke County Donors _____	29
Financial Statement _____	30
Staff _____	31

The Northern Indiana Community Foundation, Inc. has strived for accuracy in producing this annual report.

We apologize for any errors and omissions. We also welcome any suggestions and comments you may have for future issues.

What is the Northern Indiana Community Foundation, Inc.?

The Northern Indiana Community Foundation, Inc. (NICF) is a public, charitable trust that was established by civic-minded leaders of Cass, Fulton and Miami counties in 1993. The counties of Pulaski and Starke joined the NICF in 1996. In July, 2001 and May 2002, Cass County and Pulaski County, respectively received their 501(c)(3) status and are independent of the Northern Indiana Community Foundation, Inc.

The NICF is governed by a volunteer board from our member counties. People of all means can make a lasting difference in their community by using the NICF as a vehicle to fulfill their philanthropic dreams. We do this by providing donors with flexible, efficient, and tax-effective ways to ensure their charitable giving achieves the greatest impact in each county.

We seek to enrich the quality of life of each of these communities by administering funds entrusted or bequeathed by individuals, corporations and other organizations and agencies. The NICF provides sound management of these contributions as part of a permanent endowment in each separate county. Today and forever, our communities are meeting changing needs due to the generous support of our donors.



800 Main St., Rochester, Indiana

574.223.2227 or 877.432.6423

NICF Mission Statement

To build a growing endowment in each county we serve through donor relationships and to provide ethical, philanthropic leadership for enrichment and assistance to human services, education, revitalization, social, art and cultural endeavors.

Northern Indiana Community Foundation, Inc.

Serving our Family of Donors in Fulton, Miami & Starke Counties

NICF Board of Directors

Don Groenleer	NICF President	Fulton County
Tom Edington	NICF Vice President	Miami County
Cherry Gumz	NICF Secretary	Starke County
Glenda Bode	NICF Treasurer	Fulton County
Debbie Balsbaugh		Miami County
Jim Emrich		Miami County
Marilyn Fritts		Fulton County
James Hardesty		Starke County
Bob Hoffman		Fulton County
Brad Lawrence		Starke County
Susan Perkins		Miami County
Jeff Price		Miami County
Sandy Sawyer		Fulton County
Lynn Seghetti		Starke County
Mat Swanson		Starke County



Fulton County Office
822 Main St., Rochester
574.224.3223



Miami County Office
13 E. Main St., Peru
765.475.2859



Starke County Office
400 N. Heaton St., Knox
574.772.3665

“Never doubt that a small group of thoughtful, committed citizens can change the world. Indeed, it is the only thing that ever has.”

Margaret Mead

Dear Friends

President's Letter

The years 2002 and 2003 presented many milestones to the Northern Indiana Community Foundation, Inc. Miami and Fulton counties celebrated their tenth anniversaries with gala events that were not only fun but also raised additional dollars for the funds of the foundation. These years also marked the passing of some of the founders and early leaders of The NICF board. John Nelson, Arlowa Vorm and Dick Cassidy all contributed an immense amount of time and expertise in the formation of the NICF and its policies. Our heartfelt thanks go to their families. Rest assured that their legacy will live on in the thoughts and actions of every board member who served with them.



Donald R. Groenleer and Tom Edington

Several other early leaders left the NICF board in 2002 and 2003 due to term limits and other commitments. Ted Waggoner, Ron Meyer, Doug Rice, Glenda Bode, Jeff Price, Donita Conner, Jim Emrich, Cherry Gumz, and Lynn Seghetti have all left the board. Their service has shaped the NICF into the dynamic organization that it has become. Thank you all for your commitment and support.

We hired a new executive director Terri Johnson who has ably led the organization since September of 2002. She came to the position with a wealth of experience in financial management and foundation issues. We look forward to many years of her leadership. We also added Tami Murphy as a part-time administrative assistant, to the existing staff members Chris Gleim and Sandy Grandstaff. The NICF also expanded local operations in Fulton and Miami counties by adding a part-time office and an associate director who handles county issues and develops endowments for the benefit of each county. In Starke county a part-time office and administrative assistant was added. We are fortunate to have Bernie Giver in Miami county, Teri Carr in Fulton county and Corinne Becknell-Lucas in Starke county.

We have grown to over \$12.8 million in assets since we began ten years ago. This growth was a result of several matching grants from a very forward thinking and generous Lilly Endowment Inc. and substantial hard work by the staff and board of the NICF. Most of all it was due to our donors who have set in motion the funding of countless charitable endeavors into perpetuity. This vast benevolence of our donors will have a lasting and significant impact on the future of our communities. Thank you donors for your commitment to your communities.

Ten years was a good start. Due to term limits I will be joining the list of retired board members in 2004. It has been fun and gratifying to serve with such dedicated people. It also has been a real treat to get to know so many good hearted and generous people. I look forward to the continued success of the NICF.

Very truly yours,

Donald R Groenleer

Fulton and Miami Counties Celebrate "10 Years of Progress"

The FCCF yearlong theme of "Celebrating Ten Years of Progress" culminated with a grand gala on October 25, 2003. Over 150 people from the community... donors, dignitaries, steering committee members and more, shared a "magical" evening. The Elks Lodge on Lake Manitou was the site of the anniversary celebration. Entertainment included a magician and caricaturist. Attendees also enjoyed dancing to music provided by Tuxedo Junction.

Following dinner, a live auction, a "silent" auction, wine sales and the "challenge" bids, combined with special presentations of donor gifts during the anniversary celebration, netting over \$59,000!

Throughout the evening, conversation centered on the accomplishments of the Foundation and the strides made over the first ten years. The excitement was evident as onlookers awaited NICF President, Don Groenleer's answer... He accepted the



Lynn & Don kicking up their heels.

Fulton County Pres. Glenda Bode, Assoc. Director Teri Carr, Susie and Dean Baker.



challenge of "dancing with his wife, Lynn" and promptly garnered a \$500 check!

The 10th Anniversary Celebration Gala for the Miami County Community Foundation was held Saturday, October 11, 2003, at the Grissom Club. Music, elegant candlelight dining including a delicious prime rib dinner, live and silent auctions made for a very memorable evening.

Over \$28,000 in contributions to the unrestricted endowment fund were raised to benefit Miami County. Corporate sponsors were: American Trust Federal Savings Bank, American Stationery, Bryan Steam, First Farmers Bank and Trust, Frances Slocum Bank, Paul Richard GM Center, Rock Industries, Inc., Bob Schwartz Ford, Chrysler, Jeep and Wells Fargo Bank. DJ service provided by Andy Ashbrook. Auctioneer services by Terry Hughes. Decorations by Sharon Petty. Members of the Gala Committee were Debbie Balsbaugh, Kay Clary, Carrie Gallahan, Bernard Giver and Jeffrey Price.



Tom Edington, Phebe Edington, Grace Baumgartner, Mark Baumgartner, Rachel Branyan and Jamie Branyan



Parker Cutler, Linda Guthrie, Connie Cutler, and Dr. Tom Guthrie enjoying the art and the fun.

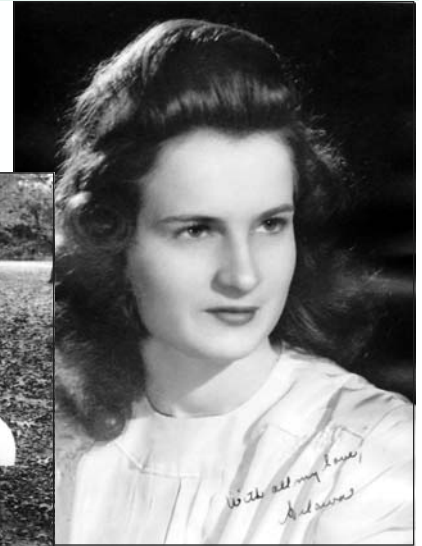
Family, Friends, Community...remembering Arlowa

You'd be hard pressed to find a person who exemplified love and service more than Arlowa Vorm. It wasn't surprising to hear her husband Fred say, "Some people just talk about what they'd like to do...Arlowa went out and did it!" Not only was she the driving force behind the establishment of a park system in her hometown of North Judson, she got people to donate land, money and volunteer helping to make it one of the most beautiful and beloved group of town parks you'll find anywhere.

Arlowa was an accomplished musician, who played French horn at Butler University, played and taught piano lessons at home, lead the children's choir at the North Judson First United Methodist Church and raised four children. In the early 80's she and daughter Nancy had a great idea of starting a coffee house, and so they opened the popular *Coffee Tea Market* in Valparaiso, very much ahead of its time.

Arlowa was a founding member of the Starke County Community Foundation and was instrumental in raising the funds needed to make the foundation a reality in Starke County. Not only did she get others to create endowments, she set an example by starting the Schuyler Family Endowment Fund, together with Fred the North Judson Park Endowment Fund and major contributions to the Starke County Operating Endowment. Fred recently established the Arlowa S. Vorm Memorial Fund in her memory.

We lost Arlowa on December 15th 2003, and while Fred and Arlowa shared 56 years together, we had her with us at the foundation for too short a time. We'll miss her support, songs and strength but will keep those and the many qualities that she shared with us, always.



Top left - Riding the whale at the park. Top right - A picture for Fred.
Bottom - Fred and Arlowa at the town park pavilion with 3 of their 6 grandchildren

Richard Cassidy Community Philanthropic Fund

Successful organizations are created when, among the founders, there is one person who becomes the heart and soul of the organization. For the Northern Indiana Community Foundation, Inc. that person was Richard Cassidy. With his vast and varied background and his understanding of the several communities which comprised the Northern Indiana Community Foundation, Inc., Dick Cassidy was able to capture the essence of community and the obligation of foundation for the new organization he helped to create.

Always holding the board to the highest ethical standards, Dick was a leader by his example. At his retirement from the board he was awarded the "Benjamin Franklin Seat as Board Member Emeritus." With his untimely passing on June 9, 2003, his fellow board members, friends and associates expressed their appreciation for Dick's leadership by establishing the Richard Cassidy Community Philanthropic Fund. This is a tribute to remember the important contribution made to the success of the NICF by its friend and mentor Dick Cassidy.

The purpose of this fund is "to promote education and public awareness of community philanthropy and other appropriate philanthropic activities in the counties served" by the Foundation, and to perpetuate the philanthropic elements of life in honor of the life Dick Cassidy had as a leader in Logansport, in Cass County, and throughout the banking community, as well as throughout the communities that now hold membership in the Northern Indiana Community Foundation, Inc.

Community Leadership

Forever managing stewardship in Fulton, Miami & Starke Counties

- ▶ **Act** as a community catalyst
- ▶ **Build** endowments to provide for community needs now and in the future
- ▶ **Cultivate** development of new organizations and programs



Donor Opportunities

Everyone can be a Philanthropist

The Northern Indiana Community Foundation, Inc. provides a unique vehicle for addressing the charitable needs of our communities while allowing donors great flexibility in fulfilling their philanthropic goals. Donors may designate gifts to an unrestricted endowment, a field of interest endowment, a donor advised endowment, a designated endowment, an agency endowment, a scholarship fund, an operating endowment, any of the foundation's existing endowment funds, or to the general operating fund.

Agency Endowment

A non-profit organization may establish endowment funds with the Foundation for the benefit of that organization.

Designated Endowment

Not only allows a donor the opportunity to support their favorite charity, but also allows the support to continue in perpetuity. The donor merely selects the charity that they wish to support.

Donor Advised Endowment

Gives the donor the advantage of assisting in charity selection each year, but allows the donor exemption from federal restrictions placed on private foundations. Final decisions are made by the NICF's Board of Directors.

Field of Interest Endowment

Allows the donor to respond to certain program areas, such as youth, education, health, environment, etc. Grants made from these funds specify the field of interest, but not the charitable agency.

Operating Endowment

Gives the donor the opportunity to support the community foundation's internal operations.

Scholarship Fund

May be established in memory of a loved one or to honor family or friends so that deserving young people can get the education they might not otherwise receive.

Unrestricted or Undesignated Endowment

Allows for the greatest flexibility of use of the fund's income by responding to changing community needs. The NICF Board of Directors are able to assess the greatest needs of the community and use the fund's income to respond to those *needs today and forever*.

Foundation Funds of Fulton County

Unrestricted Funds

E. Paul and Annabelle Baker and Harold and Mildred Turk Unrestricted Fund - Established by Dean and Suzanne Baker in honor and memory of their parents to provide support for charitable purposes in Fulton County. *Established 2002*

Baxter, Inc. Fund - Established by the founders of Baxter Drug Store, Rochester, Indiana for local charitable purposes. *Established 1995*

Mary and Fred Fraser Fund - Provides support for charitable purposes. *Established 1998*

Fulton County General Unrestricted Fulton County Heritage Fund

The Eugene and Marilyn Glick Fund in Honor of Faye Biccard Glick - In honor of the Glick's 50th Wedding Anniversary. *Established 1997*

First Federal Savings Bank Unrestricted Fund - Provides support for charitable purposes. *Established 2002*

George and Dorothy Groenleer and Lyle and Doris Hillman Unrestricted Fund - Supports charitable purposes. *Established 2002*

Field of Interest Funds

Richard Cassidy Community Philanthropic Fund - To promote education and public awareness of community philanthropy and other appropriate philanthropic activities in the counties served by the Northern Indiana Community Foundation, Inc. *Established 2003*

Fulton County Youth Endowment Fund - Established by the Fulton County Boys and Girls Club, Inc. to provide support to an activity or program specifically for the youth of Fulton County. *Established 2003*

J. Frederick and Patricia B. Hoffman Fund - To perpetuate the study of the history of Fulton County, Indiana in memory of Dr. George E. Hoffman, through the Fulton County Historical Society. *Established 1996*

Designated Funds

Akron United Methodist Church Fund - Supports the Akron United Methodist Church of Akron, Indiana. *Established 2000*

Garry Daniels-Lake Manitou Association, Inc. Memorial Fund - To provide continuing support to Lake Manitou Association, Inc. *Established 2000*

Ernest O. Baxter Fund - Supports Grace United Methodist Church of Rochester. *Established 1995*

First Christian Church of Rochester, Local Mission Fund - To support the First Christian Church of Rochester-Local Missions Fund. *Established 1996*

Fulton County Historical Society Fund - Provides support for the Fulton County Historical Society. *Established 1996*

Fulton County Public Library Fund - Supports the Fulton County Public Library. *Established 1996*

Grace United Methodist Church Fund - To assist Grace United Methodist Church of Rochester. *Established 1995*

Henry Township Volunteer Fire Department Endowment Fund - To provide support to Henry Township Volunteer Fire Department. *Established 1999*

The R. Wayne Smith & Virginia Bryant Smith Scholarship Fund - The Smith's established this fund to provide scholarship support for Manchester College Students from Fulton County. *Established 1999*

United Ministries of Fulton County - To support the United Ministries of Fulton County. *Established 1997*

Helen Pike Utter Endowment for Pike Memorial Park Fund - Support for Pike Memorial Park located in the Northeast part of Akron. *Established 1997*

Walter D. Waechter and Grace C. Fites Waechter and Family Fund - To support the Akron Cemetery Association, Inc. and the Akron Carnegie Public Library, Akron, Indiana. *Established 2001*

Donor Advised Funds

The Katherine J. Belcher Fund - For local charitable purposes. *Established 1998*

The First Federal Savings Bank Fund - For local charitable purposes. *Established 1998*

The Jim and Lalla Heyde Family Fund - For local charitable purposes. *Established 1999*

Jennifer Kingery Overmyer Memorial Fund to Benefit the Libraries of Rochester

Community School Corporation - Support to the four libraries within the Rochester Community School Corporation. *Established 1999*

Foundation Funds of Fulton County continued....

Donor Advised Funds continued...

Pike Lumber Company, Inc. Fund - For community redevelopment, support of educational and religious institutions, charitable purposes in Fulton and Clay Counties, Indiana, and such other communities as recommended by the donor to the Foundation. *Established 1999*

Rochester Telephone Co., Inc. - For local charitable purposes. *Established 1995*

Rochester Community School Academic Fund- Created by Donald R. and Lynn Groenleer to support scholastic and extra curricular academic programs for the students of Rochester Community School Corporation. *Established 1997*

M.M. Fund - Support for appropriate charitable and other exempt purposes. *Established 2000*

The Good Cheer Fund of Fulton County - To support charitable and other exempt purposes in Fulton County. *Established 2000*

Scholarship Funds

Jim Barkman Memorial Scholarship Fund - For qualified students graduating from Rochester High School, who attended Riddle Elementary School at any time. *Established 2003*

The W.D. Cumberland 4-H Scholarship Fund - For qualified students graduating from Rochester, Tippecanoe Valley, Caston or Winamac High Schools. *Established 2003*

Lawrence & Violet Seiwert Scholarship Fund - To provide scholarships for qualified students graduating from Rochester High School who are deserving of financial assistance. *Established 2003*

Patricia Kumler Hoover Nursing Scholarship Fund - Scholarships for qualified graduating seniors from Tippecanoe Valley H.S. enrolled in an accredited state nursing program. *Established 2003*

Frounfelter Scholarship Fund - Scholarship for qualified students from Rochester High School and who are likely to succeed as college, university or trade school students. *Established 2003*

Eric E. Smoker Memorial Scholarship Fund - Providing scholarships to students studying art during their high school career. *Established 2001*

Melissa Hoffman Gamel Scholarship Fund - To qualified students graduating from Rochester High School and interested in the study of science and technology. *Established 2001*

Howard M. Utter and Helen Pike Utter Scholarship Fund-Provide scholarships to

qualified students residing in Indiana. *Established 2000*

Back Home Again In Indiana Scholarship - For qualifying Fulton County Students. *Est. 2000*

Elizabeth V. Babcock Scholarship Fund - For eligible Rochester High School graduates. *Established in 1974 transferred to NICF in 1996*

The Simon Deeb Scholarship Fund - Established by friends and family of the late RHS teacher providing agricultural educational scholarship support. *Established 1996*

Fulton County Foster Parent Association Scholarship Fund - For those interested in vocational or college education. Students will be current/past foster children, with ties to Fulton County, or others recommended by a guidance counselor, with a financial need. *Established 1999*

Elmer Harris and Beulah P. Harris Scholarship Fund - For students residing in Union Township, Fulton County, Indiana, at the time of their graduation. *Established 1998*

Rochester High School Scholarship Endowment Fund - Provides scholarships for selected Rochester High School Graduates. *Established in 1982 transferred to NICF in 1995*

Angele J. Kochenderfer Memorial Scholarship Fund - Providing scholarships to students graduating from Rochester High School who are in need of financial assistance. *Established 1998*

Steven Bruce Mattice Memorial Scholarship Fund - Scholarships for Caston High School graduates who are deserving of financial assistance. *Established 1999*

Harold E. and Neva Funk Mikesell Scholarship Fund - Scholarship support for eligible persons, as advised by the Mikesell Scholarship Committee. *Established 1997*

Ginger Miller Graduate Studies Scholarship Fund - Funding for qualified college graduates pursuing further graduate or professional schooling, who are residents of Fulton County, Indiana *Established 1997*

Coach John Robert McKee Memorial Scholarship Fund - For students graduating from Rochester High School. *Established 2002*

Jayne Ann Good Memorial Scholarship Fund - Provides scholarships to graduates of Rochester High School, in memory of Jayne Ann Good. *Established in 1984 transferred to NICF in 1995*

Foundation Funds of Fulton County continued....

Scholarship Funds continued...

George M. Schwenk Scholarship Fund - For qualified students graduating from Rochester High School pursuing a career in the field of agriculture or ag. related field deserving of financial assistance. *Established 1999*

Union Township Scholarship Fund—Provides college scholarships to Union Township residents who have resided in the township continuously for a minimum of two years. *Established 1996*

John Nelson Memorial Scholarship Fund - To qualified students residing in Aubbeenaubee and Rochester Township. *Established 2002*

Rochester Firefighters' Memorial Scholarship Fund – Established in memory of Greg Miller for Rochester High School graduates. *Established 2002*

Agency Funds

Rochester Kiwanis Club Agency Fund - Established by the Rochester Kiwanis Club providing scholarships for qualified students graduating from Rochester High School and Caston High School. *Established 2003*

Psi Iota Xi, Eta Mu Chapter - Established for the benefit of Psi Iota, Eta Mu Chapter. *Established 2000*

First Presbyterian Memorial Scholarship Trust Fund - Provides educational scholarships for eligible persons, advised by First Presbyterian Church of Rochester. *Established 1999*

Fulton County Community Host Fee Fund - Support for general county purposes, including but not limited to environmental education and preservation activities as determined by the Fulton County Council and administered for the sole use and benefit of Fulton County Council. *Established 1999*

Akron Lions: Kenny Bright Scholarship Fund - Scholarships for qualified youth living in the Akron area that attended Akron Elementary of Tippecanoe Valley School Corporation and graduated from Tippecanoe Valley High School and deserving of financial assistance. *Established 1999*

Fulton County Solid Waste Management District Fund - For appropriate environmental, educational, and charitable purposes in Fulton County. *Established 1997*

United Way of Fulton Co., Inc. - For local charitable purposes. *Established 1996*

Woodlawn Hospital Fund – To help provide support to Woodlawn Hospital. *Established 1996*

Non-Permanent Funds

Camp-We-Can Pass-Through Fund - Established by Jodie Simpson and Tina McGaughey for the child with special needs and support the charitable intentions of the Camp-We-Can. *Established 2003*

Fulton County Partners in Education Pass-Through Fund – Supporting the charitable intentions of the Fulton County Partners in Education. *Established 2003*

Rochester Parkside Skate Park Pass-Through Fund - For the charitable intentions of the development of the skate park. *Established 2003*

Stephen Fellers Memorial Scholarship Fund - Supporting the charitable intentions of the Stephen Fellers Memorial Scholarship Fund through the Fulton County Community Foundation. *Established 2000*

Akron Revitalization Committee Pass-Through Fund - For charitable intentions of the Akron Revitalization Committee. *Established 1998*

Brent Blacketor Memorial Sports Complex Pass-Through Fund - Charitable intentions of the Brent Blacketor Memorial Sports Complex and their fund raising efforts. *Established 1998*

Amanda Drudge Scholarship and Missions Fund - Supporting the charitable intentions of the Mission Board of the Olive Branch Church. *Established 1997*

Friends of the Liberty Township Park - supporting the Liberty Township Park Five-year Plan in Fulton, Indiana. *Established 1997*

Friends of Union Township Park Pass-Through Fund - Supports of the charitable intentions of the Friends of Union Township Park. *Established 1999*

Manitou Mountain Project Pass Through Fund - For charitable intentions of the Rochester Parks Department and Manitou Mountain community group and their fund raising efforts. *Established 1997*

Fulton County Park and Recreation Department Pass-Through Fund - For the charitable intentions of the Fulton County Park and Recreation Board. *Established 2002*

Gerig Round Barn Committee PT Fund - Supports the charitable intentions of the Gerig Round Barn Committee. *Established 2002*

Foundation Funds of Miami County

Unrestricted Funds

Miami County General Unrestricted

Miami County Heritage Fund

Donald W. Ferrara Unrestricted Fund - Established by Judy F. Ditzler in memory of her father, Dr. Donald Ferrara, to provide support for charitable purposes in Miami County. *Established 2002*

Jane and Bob Haskett Fund - To provide support for charitable purposes. *Established 2002*

Miami County Services Committee Unrestricted Endowment Fund - To provide support as directed by the Foundation's Board of Directors for charitable or other exempt purposes. *Established 2003*

John Nixon Unrestricted Fund - Provides support for charitable purposes. *Established 2002*

Chris and Beth Smith Unrestricted Endowment Fund - providing support for charitable purposes. *Established 2002*

Field of Interest Funds

Richard Cassidy Community Philanthropic Fund - To promote education and public awareness of community philanthropy and other appropriate philanthropic activities in the counties served by the Northern Indiana Community Foundation, Inc. *Established 2003*

Designated Funds

Beulah Hoffman Endowment Fund - Support to the Salvation Army, Ole Olsen Memorial Theatre, Miami County Historical Society and the YMCA of Peru and Miami County. *Established 1997*

Purdue Christian Campus House Founders Fund - Supporting the Purdue Christian Campus House, Inc. *Established 2000*

Vilma Ault Baptist Memorial Endowment Fund - Supporting the First Baptist Church, Denver, Indiana. *Established 1998*

Circus City Festival, Inc. Scholarship Fund - Providing scholarships through Circus City Festival, Inc. *Established 1998*

Dukes Memorial Hospital - For Dukes Memorial Hospital to carry out its role and mission. *Established 1996*

Grate Family Fund for Music and Multimedia Ministries at Main Street United Methodist Church - For the Main Street United Methodist Church music and multimedia programs. *Established 1999*

The Parkview United Methodist Church Endowment Fund in Memory of Kelly Ann Edwards - Supports the Parkview United Methodist Church youth programs. *Established 1996*

Perry M. Schneider Memorial Award - Scholarship grants to fund employment interview contests for the National Post-Secondary Agricultural Student Organization. *Established 1999*

Don W. Craig Memorial Golf Endowment Fund - For the Peru Municipal Golf Course summer camp. *Established 2002*

Jean Fisher Endowment Fund - For the Main Street United Methodist Church Capital Improvement Fund. *Established 2002*

Scholarship Funds

Back Home Again In Indiana - For qualifying Miami County Students. *Established 2000*

James R. and Bette J. Davis Scholarship Fund - For scholarships to qualified students graduating from Peru High School. *Established 2000*

Tiger Pride Scholarship Fund - Provides scholarships to qualified students graduating from Peru High School. *Established 2000*

The Claude S. and Marie M. Berger Foundation, Inc. - Scholarships for the Tippecanoe Valley School Corporation in Fulton County and North Miami School Corporation in Miami County. *Established 1996*

Marilyn Coppernoll Memorial Scholarship Fund - For scholarships to students graduating from Peru, Maconaquah or North Miami High Schools. *Established 1998*

The Randy Hughes Memorial Scholarship Award - For the Valedictorian from North Miami High School. *Established 1997*

J & J Scholarship Fund - For local and non-traditional students needing financial assistance. *Established 1999*

Alice Moon Scholarship Fund - Scholarships to Peru Senior High School graduates. *Established 1998*

Miami County Historical Society Richardson Scholarship Fund - Scholarships to Miami County students. *Established 1998*

Foundation Funds of Miami County continued....

Agency Funds

Miami County YMCA/Miller Pool - Supports Operations or capital improvements to the Miller Pool. *Established 1996*

Miami County YMCA - Supports the Miami County YMCA. *Established 1996*

Miami County Historical Society, Inc. - Benefits the Miami County Historical Society, Inc. *Established 1998*

Girl Scout of Tribal Trails Council, Inc.

Endowment Fund - For promoting improvement of the Girl Scout of Tribal Trails Council, Inc., its members, programs and volunteers. *Established 1999*

United Way of Miami County, Inc. - Supports the United Way of Miami County. *Established 1996*

Grissom Air Museum Agency Fund - For improvements of the Grissom Air Museum. *Established 2002*

The Miami County 4-H Memorial Scholarship - For Miami County 4-H members for scholarships. *Established 1997*

Psi Iota Xi Sorority - Support for community philanthropies. *Established 1996*

Main Street Methodist Church - Supports programs and to maintain church property. *Established 1999*

Rotary Club of Peru Scholarship Fund - For the Rotary Club Scholarship. *Established 1997*

Peru First Baptist Memorial Scholarship Fund - Scholarships for college students of the Peru First Baptist Church congregation. *Established 1999*

Non-Permanent Funds

Miami-Cass County REMC Operation Round-Up Trust P/T Fund - For charitable purposes in the service area of Miami-Cass County Rural Electric Membership Corporation. *Established 2003*

J & J Scholarship Pass-Through Fund - For scholarships to qualified local students and nontraditional students who are deserving of financial assistance. *Established 1999*

John V. and Joyce L. Lewis Scholarship Pass-Through Fund - Scholarships for qualified students graduating from Peru High School. *Established 2002*

Maconaquah Youth Football - For charitable intentions of the Maconaquah Youth Football League. *Established 1999*

MiamisFort Pass-Through Fund-For charitable intentions of the MiamisFort Park. *Established 1999*

Tiger Cub Football League - Supports the Tiger Cub Football League. *Established 1996*

Velma Derbyshire Art Scholarship Fund - Established by Harriet Ann Hall to provide scholarships to Peru High School students studying fine arts or art education. *Established in 1968 transferred to NICF in 2001*



Circus City Center, Peru Indiana

I've come to believe that each of us has a personal calling that's as unique as a fingerprint - and that the best way to succeed is to discover what you love and then find a way to offer it to others in the form of service, working hard, and also allowing the energy of the universe to lead you.

Oprah Winfrey



Foundation Funds of Starke County

Unrestricted Funds

Starke County General Unrestricted – For support as directed by the Starke County Community Foundation's Board. *Established 1997*

Starke County Heritage Fund

Schuyler Family Endowment Fund - Provides support to the Starke County Unrestricted Fund. *Established 1998*

The Freedom Fund - Support for charitable purposes. *Established 2002*

Ann R. Nichols Memorial Fund-For the Starke County Community Foundation unrestricted fund. *Established 1997*

Field of Interest Funds

Richard Cassidy Community Philanthropic Fund - For education and public awareness of community philanthropy and other appropriate philanthropic activities in the counties served by the NICF *Established 2003*

Maude Brown and Henry F. Schricker Endowment Fund - Supporting Starke County fourth-grade history projects or tours. *Established 1998*

Designated Funds

Ancilla College Endowment Fund - Support to Ancilla College, Donaldson, Indiana. *Established 1997*

Carolyn J. Davis Memorial Fund - For CCD programs at SS. Cyril and Methodius Catholic Church of North Judson, Indiana. *Established 1998*

Arlene M. Hamilton Memorial Fund - For the Coalition Against Domestic Abuse, Inc. *Established 1997*

Hoosier Valley Railroad Museum Endowment Fund – For Hoosier Valley Railroad Museum, Inc. *Established 1999*

Rebecca Sue (Keys) Jensen Memorial Fund – For the Starke County Humane Society. *Established 1999*

Edmund Lesniewski Family Fund – Supports the SS. Cyril and Methodius Catholic Church of North Judson. *Established 1998*

North Judson Park Endowment Fund - Supporting the North Judson Park Board. *Established 1997*

Oregon-Davis Elementary Academic Enhancement Fund – For financial support to Oregon-Davis Elementary Schools. *Established 1999*

The Palmer Fund – Support for educational needs in Starke County. *Established 1997*

Starke County Historical Society, Inc. Fund – For the Starke County Historical Society. *Established 1999*

Knox Community School Corporation Student Scholarship/Presentation Fund– Provides scholarships to students graduating from Knox Community School Corporation and/or to secure the services of speakers or program presenters to students, teachers or parents in the Knox Community School Corporation. *Established 1998*

Johnathan Edward Lambert Endowment Fund-Supports the St. Peter Lutheran School Endowment Fund. *Established 1998*

Johnathan E. Lambert Memorial Fund-For the North Judson-San Pierre Future Farmers of America and the North Judson-San Pierre Agri/Science Academy. *Established 1998*

Marshall-Starke Development Fund- Supporting local mentally and physically handicapped individuals. *Established 1998*

North Judson United Methodist Church Trustees' Building & Maintenance Fund-For support to the North Judson United Methodist Church. *Established 1998*

SS. Cyril and Methodius Catholic Church Fund-Support to SS. Cyril and Methodius Catholic Church of North Judson. *Established 1998*

Starke County Humane Society Fund– For the Starke County Humane Society Shelter. *Established 1998*

Starke County Public Library System Endowment– Supports the Starke County Public Library System. *Established 1998*

Starke County Scholarship Foundation Fund- Scholarships to qualified Starke County high school seniors. *Established 1998*

Mary E. Norem and Hattie Warnke Memorial Fund-Supporting the Davis Wesleyan Church, Hamlet, Indiana. *Established 2002*

Kathleen and Gerald Paras Family Fund- Support to the North Judson Public Library. *Established 2002*

Binkley-Bales-Christoph Endowment Fund- Supporting the Davis Wesleyan Church, Hamlet, Indiana. *Established 2003*

Railroad Twp./San Pierre Alumni Scholarship Foundation Fund-For scholarships. *Established 1998*

Catherine and Frank Alan Scholarship Fund- Support to Ancilla College for needy Starke County students. *Established 1997*

Foundation Funds of Starke County continued....

Donor Advised Funds

NIPSCO Endowment Fund-Support to a Starke County resident attending the SCILL Center.

Established 1998

1st Source Bank Fund- For local charitable and tax-exempt purposes. *Established 1998*

Scholarship Funds

Richard H. Gumz Agricultural Scholarship Fund

-To Starke County students attending Purdue University pursuing a degree in an agricultural related field of study. *Established 2001*

Back Home Again In Indiana-Scholarships to qualifying Starke County students. *Established 2000*

Brooklyn A. Boo Scholarship Fund-Scholarships to nursing and/or medical students who have graduated from North Judson-San Pierre High School deserving of financial assistance. *Established 1998*

Helen and Ware Edgar Scholarship Fund-For Starke County, High School graduates pursuing a career in journalism. *Established 1997*

Ed Hasnerl/WKVI Scholarship Fund-Established in 1999 to provide scholarships to qualified graduating seniors, who are Starke County Residents, studying communications and media related subjects. *Established 1999*

Clarence Lawrence Memorial Scholarship Fund-For qualified students graduating from North Judson-San Pierre High School, Knox High School or Oregon-Davis High School. *Established 1999*

Starke Memorial Hospital and Medical Staff Health Occupation/Medical Education

Scholarship Fund-For Starke County residents pursuing a career in a health field. *Established 1998*

1897 Charley Vorm Memorial Scholarship Fund-Scholarships to students graduating from North Judson-San Pierre High School with a financial need. *Established 1998*

Forrest and Helen Whitson Scholarship Fund-For sophomore, junior or senior students at Purdue University in a School of Engineering, Agriculture or Consumer and Family Living, who have graduated from a Starke County High School with a financial need. *Established 1998*

Robert O. and Doris E. Winters Scholarship Fund-Provides scholarships for qualified students graduating from Knox Community High School with a financial need. *Established 1999*

Winifred J. Simpkins/Spirit of Nursing Scholarship Fund-Provides scholarships to Starke County residents enrolled in an accredited registered nursing program in Indiana. *Established 2002*

Agency Funds

Starke United, Inc. Fund-For the purpose of promoting improvement of Starke United, Inc. *Established 1998*

North Judson - Wayne Township Public Library Endowment Fund-For the North Judson-Wayne Township Public Library. *Established 1998*

Ancilla/SCILL Fund-For needy Starke County students attending the SCILL Center/Ancilla. *Established 1998*

Non-Permanent Funds

HOSPICE Program of Starke County Pass-Through Fund-Supports the charitable intentions of the Hospice Program of Starke County. *Established 2003*

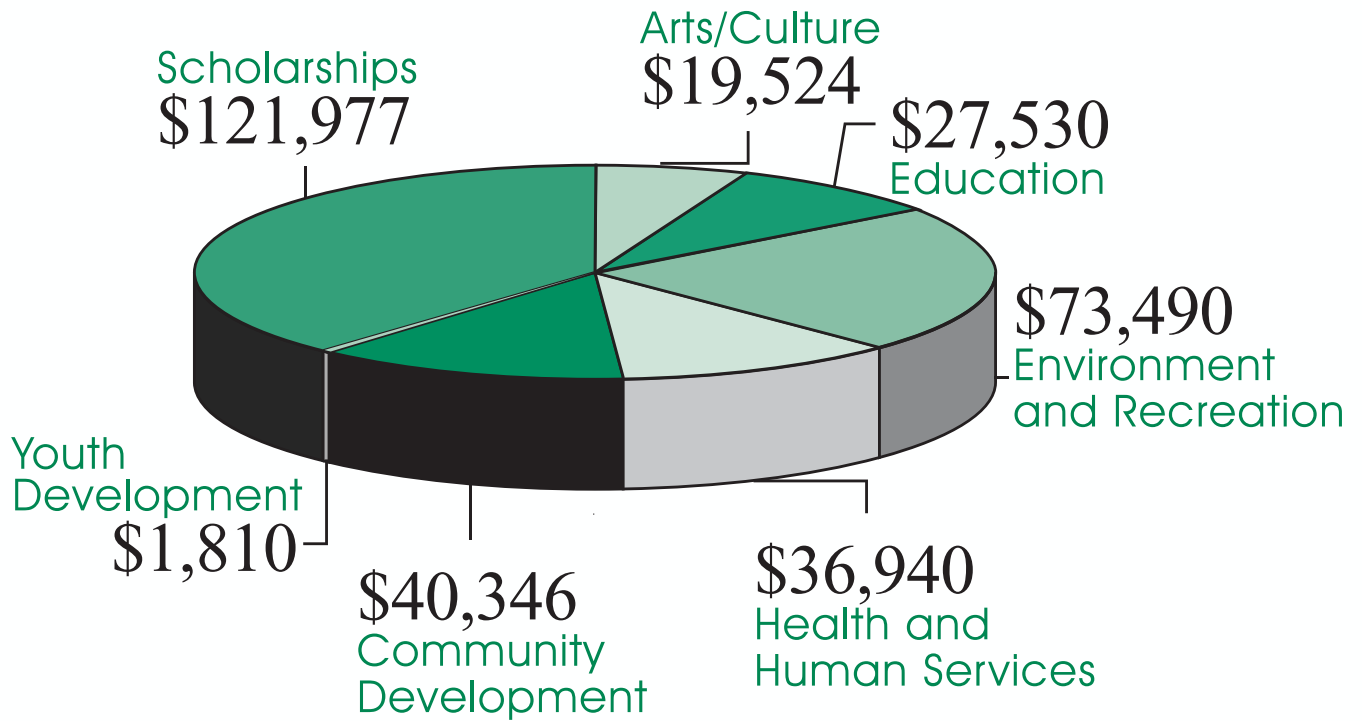
Healthy Families Program of Starke County Pass-Through Fund-Supporting the charitable intentions of the Healthy Families Program of Starke County. *Established 2003*

Charitable Remainder Trust

Swanson Family Fund-Support to Ancilla College, SCILL Center of Starke County, and the Starke County Public Library System. *Established 1998*



2003 Grants



“Do all the good you can, by all the means you can, in all the ways you can, in all the places you can, at all the times you can, to all the people you can, as long as ever you can.”

John Wesley

Fulton County Unrestricted Grants

Akron Lions Club - \$5,000

"Akron Community Building" (fee to contract an architect to design a community building, which would serve 4,000 to 5,000 people).

Fulton County Habitat for Humanity - \$5,000

"5th Home" (purchase and install well, pump and septic system)

Fulton County Partners in Education - \$2,000

"Fourth Grade Circuit Boards" (purchase materials and supplies needed to assemble electric circuit boards) – *Funded in part by Baxter Inc. Unrestricted Fund*

Grass Creek Lions Club - \$11,791

"Renovation of Park Shelter" (pour a cement floor, install a ceiling and a small barrier wall)

Hope Hospice of Fulton County - \$3,500

"PowerPoint Grant Fund" (purchase a PowerPoint projector and screen, a printer, a scanner and a fax machine)

Kewanna-Union Township Public Library - \$8,500

"Library Automation Technology Upgrade" (purchase software and hardware to automate the cataloging system) *Fiscal Agent for Project – Arrow Head Country RC&D Area, Inc.*

Rochester Community School Corp. - \$13,829

"Special Needs Computer Labs" (purchase 10 laptop computers w/a docking station for the Special Ed. Department, which would serve over 100 special needs students from Richland, Rochester, and Union Townships, and the entire City of Rochester) - *Funded in part by Mary and Fred Fraser Unrestricted Fund*



Grass Creek Lions Club shelter renovation and the Fulton County Partners in Education

Starke County Unrestricted Grants

Coalition Against Domestic Abuse (CADA) – \$1,000

Project: "DV Library/File Cabinets" (purchase educational books and two locking file cabinets)
Funded by Schuyler Family Endowment Fund

Hoosier Valley Railroad Museum – \$2,000

"Backshop Expansion" (provide funding to increase the working and display area of the museum's backshop facility) - *Funded by Schuyler Family Endowment Fund*

Starke County Humane Society – \$2,000

"Public Spay/Neuter Program"(assist individuals with the cost of spaying/neutering their companion animals) - *Funded by Ann R. Nichols Memorial Fund*

The Caring Place, Inc. – \$876

"Second Telephone Line" (purchase and install a second phone line w/rollover and voice mail capabilities and purchase a phone and service for that line for one year) – *Funded by Schuyler Family Endowment Fund*



Mark Knebel representative of the Hoosier Valley Railroad accepts their grant from Paul Schuyler representing the Schuyler Family Endowment Fund.

President Cherry Gumz joins board members David Matsey, James Hardesty, and donor Paul Schuyler, along with Marilyn Swanson and board member Mat Swanson in celebrating the Fall Grant Awards with homemade soup on a chilling November evening.

Grant recipients: Mark Knebel, Wendy Elam, Annette Ohlman, Julia Povilaitis, Suzanne Crider with Paul Schuyler and Grant Committee Chairman Judy Jelinek

Fulton County

Designated-Donor Advised-Field of Interest Grants

<i>Grantee Name</i>	<i>Grants</i>	<i>Program Area</i>	<i>Grantee Name</i>	<i>Grants</i>	<i>Program Area</i>
Akron Carnegie Library	164.38	Educational	Fulton County Historical Association	1,500.74	Arts, Culture
Akron Cemetery Assoc., Inc	150.22	Human Service	Fulton County Public Library	283.75	Educational
Akron Park Board	2,943.97	Recreation	Fulton County Solid Waste	2,300.55	Environmental
Akron Revitalization Committee	25.00	Community Development	Grace College	2,500.00	Education
Akron United Methodist Church	100.00	Community Development	Grace United Methodist Church	1,671.70	Human Service
Akron United Methodist Church	3,416.90	Human Service	Henry Township Volunteer Fire Department	78.71	Human Service
American Cancer Society	250.00	Health, General	Hope Hospice of Fulton County	500.00	Human Service
Ancilla College	2,000.00	Educational	Indiana Chamber of Commerce	385.00	Educational
Arrow Head Country RC&D Area, Inc	6,000.00	Community Development	Junior Achievement	250.00	Youth
Big Brothers/Big Sisters	50.00	Youth Development	Knights of Columbus	50.00	Community Development
Boy Scouts of America	100.00	Youth Development	Lake Manitou Assoc. Inc	72.77	Environmental
Brent Blacketer Memorial Sports Complex	2,500.00	Recreation	March of Dimes	100.00	Human Service
Burket Fire Department	250.00	Human Service	Mental Health Association of Fulton County	100.00	Health, General
Camp-We-Can	250.00	Youth Development	Mrs. Brenda Downs/Manitou Mountain	67.91	Recreation
Rochester Chamber of Commerce/Fireworks	500.00	Community Development	Pike Memorial Park Trustees	3,556.27	Recreation
Community Youth Fund	70.00	Youth Development	Psi-Iota-Xi, Eta Mu Chapter	68.61	Community Development
Diane Zimpleman-Liberty Twp. Park	376.00	Recreation	R & T Fencing/Rochester Skateside Park	9,746.10	Recreation
Fellowship of Christian Athletes-RHS	350.00	Youth Development	R & T Fencing/Liberty Twp Park	624.00	Recreation
Fellowship of Christian Athletes-TVHS	500.00	Youth Development	Rochester High School/Football field speaker system	200.00	Recreation
Fibar Systems/Manitou Mountain	1,416.00	Recreation	Rochester Middle School/Library	132.91	Education
First Christian Church of Rochester	624.77	Human Service	Taylor University – Upland	1,500.00	Education
Fort Wayne Philharmonic	500.00	Arts, Culture	United Ministries of Fulton County	1,103.27	Human Service
Fulton County CF-Gala	250.00	Community Development	United Way of Fulton County, Inc.	6,619.80	Community Development
Fulton County Council	1,161.24	Environmental	Woodlawn Hospital	566.10	Health, General
Fulton County Habitat for Humanity	3,915.80	Community Development	Total Fulton County	61,842.47	

Miami County

Designated-Donor Advised-Field of Interest Grants

<i>Grantee Name</i>	<i>Grants</i>	<i>Program Area</i>	<i>Grantee Name</i>	<i>Grants</i>	<i>Program Area</i>
Caldwell Monument Company/ Miamisfort	3,822.00	Recreation	National PAS Organization- Schneider Award	279.03	Educational
City Lawn & Garden Center/ Riverfront Park	553.90	Recreation	Ole Olsen/Our Town Peru, Inc.	6,856.76	Arts, Culture
Dukes Memorial Hospital	452.09	Health, General	Parkview United Methodist Church	117.61	Youth Development
First Baptist Church, Denver	1,066.30	Human Service	Psi Iota Xi Sorority	85.94	Community Development
Girl Scouts of Tribal Trails Council, Inc.	71.59	Youth Development	Purdue Christian Campus House	1,189.65	Human Service
Grissom Air Museum	50.39	Arts, Culture	R & W Excavating, Inc./ Riverfront Park	16,900.00	Recreation
Hydro Seed Inc./Riverfront Park	6,950.00	Recreation	Salvation Army-Peru	6,856.77	Human Service
Main Street United Methodist Church	405.57	Arts, Culture	SiteScapes, Inc./Riverfront Park	1,508.15	Recreation
Main Street United Methodist Church	1,305.61	Human Service	Springcreek Landscaping & Nursery, Inc./Miamisfort	8,896.00	Recreation
Miami County Golf Association/Youth camp	50.82	Youth Development	U.S. Postal Service/Miamisfort	34.00	Recreation
Miami County Historical Society, Inc.	7,666.57	Arts, Culture	United Way of Miami County, Inc.	109.22	Community Development
Miami County YMCA	9,557.50	Recreation	Total Miami County	74,785.47	

Starke County

Designated-Donor Advised-Field of Interest Grants

<i>Grantee Name</i>	<i>Grants</i>	<i>Program Area</i>	<i>Grantee Name</i>	<i>Grants</i>	<i>Program Area</i>
Ancilla College	1,903.23	Educational	Oregon-Davis Elementary School	108.22	Educational
Coalition Against Domestic Abuse, Inc	204.27	Human Service	St. Cyril & Methodius Catholic Church	257.39	Human Service
Davis Wesleyan Church	46.93	Human Service	St. Peter Lutheran School Endowment Fund	122.92	Human Service
Hoosier Valley Railroad Museum	267.79	Arts, Culture	Starke County Historical Society	276.35	Arts, Culture
Jonquil Design/ Starke County Poster Project	570.00	Community Development	Starke County Humane Society	169.72	Human Service
Knox Community School Corp.	930.92	Educational	Starke County Public Library	116.78	Educational
Marshall-Starke Dev. Center, Inc	174.64	Human Service	Starke County Scholarship Foundation	455.53	Educational
North Judson Park Board	303.21	Recreation	Starke United, Inc.	176.89	Community Development
North Judson United Methodist Church	560.53	Human Service	Total Starke County	7,516.26	
North Judson-San Pierre F.F.A. and Science/Ag	173.37	Educational			
North Judson-Wayne Twp. Public Library	697.57	Educational			

Lilly Endowment Community Scholars

The Northern Indiana Community Foundation, Inc. is honored to be the organization that makes Lilly Endowment Community Scholarship a reality for graduating high school seniors in Fulton, Miami and Starke Counties. Although Lilly Endowment Inc. established the scholarship and provided the funding and guidance, the selection process is up to each local community foundation, their scholarship selection committee and Independent Colleges of Indiana. We thank them for their time, support and excellent work.

During the first six years of the program, 61 local students have received Lilly Endowment Community Scholarships through the Northern Indiana Community Foundation, Inc..

Adam Jason Albright, Kevin McCarthy and Jenna Danielle Melton are this years Fulton County Lilly Endowment Community Scholars.

Adam, attends Purdue University majoring in bio-chemical engineering. Kevin is also enrolled at Purdue University majoring in computer science. Jenna, is a pharmacy major at Butler University. All three Futon County scholars are graduates of Rochester High School.

Douglass R. Anewalt, Maggie Noonan and Michael W. Nowling are the 2003 Miami County Lilly Endowment Community Scholars.

Fulton County Lilly Endowment Community Scholars



Adam Jason Albright



Kevin McCarthy



Jenna Danielle
Melton

Douglass is a graduate of Maconaquah High School and attends Hanover College. Maggie, also a Maconaquah graduate, is studying elementary education at Anderson University. Michael, a graduate of Peru High School, is studying pharmacy at Purdue University.

The 2003 Starke County Lilly Endowment Community Scholars are Megan Lynn Danyi, Karl Adam Hall and Craig Roland Nielsen.

Megan, a graduate of North Judson-San Pierre High School, attends Purdue University currently in the pharmaceutical sciences. Craig, also a graduate of North Judson-San Pierre, is majoring in communications at Valparaiso University. Karl, is studying engineering at Tri-State University and is an Oregon-Davis Junior/Senior High School graduate.

Miami County Lilly Endowment Community Scholars



Douglass R. Anewalt, Maggie Noonan and
Michael W. Nowling

Starke County Lilly Endowment Community Scholars



Megan Lynn Danyi



Craig Roland Nielsen



Karl Adam Hall

Fulton County Scholarship Awards

Elizabeth V. Babcock Scholarship Fund

Ms. Myra Absi
Mr. Adam J. Albright
Mr. Jason Arnett
Ms. Christine Baker
Mr. Brian Bauman
Mr. Jeffrey Bauman
Mr. Damic Beck
Ms. Brittany Blackburn
Ms. Susann Border
Ms. Amanda Bowen
Mr. Todd Bowen
Ms. Ashley Bradley
Mr. Michael Brash
Mr. Aaron Brown
Ms. Gessica Brown
Mr. Robert L. Bruder
Ms. Allison Burkett
Ms. Amanda Burkett
Mr. Dustin Burkett
Ms. Amy Callahan
Ms. Kristy Callahan
Mr. Chad Calvert
Ms. Heather Clark
Ms. Melody Cloud
Mr. Neal Cloud
Ms. Stephanie Cloud
Ms. Melissa Cole
Ms. Amanda Conley
Ms. Sara Cumberland
Ms. Kiley Dague
Ms. Rebekah Davis
Ms. Jodi Dell
Ms. Darlene Divine
Ms. Leslie Douglass
Mr. Joshua DuBois
Ms. Sarah E. Eiler
Ms. Stacy Eisenman
Mr. Burke A. Eizinger
Ms. Brook Enyart
Ms. Heather Evans

Mr. Kyle Felke
Mr. Adam Frounfelger
Ms. Tiffany Gentry
Ms. Heather Gibbons
Mr. Clinton Grossnickle
Ms. Jessica Grossnickle
Mr. Jeremy Grube
Ms. Jaymi Hartzler
Ms. Amy Heishman
Ms. Amy D. Helt
Mr. Joe Helt
Ms. Rachel Hiatt
Ms. Gessica Hoge
Mr. Bryan Holcomb
Ms. Allison Horoho
Mr. Bartholomew Hott
Ms. Ashley Howdeshell
Ms. Ashlee Howton
Mr. Loyd Hudson
Ms. Lacey Huffman
Mr. Scott Jana
Mr. Andrew Jansing
Ms. Brandi Johnson
Mr. Adam Jones
Ms. Kasi M. Kimmel
Ms. Rebecca Kline
Ms. Tera Knapp
Ms. Julia Krol
Ms. Nichole Lease
Mr. Joshua W. Martin
Mr. Kevin McCarthy
Mr. Brett A. Miller
Mr. Gregory C. Miller
Mr. Marcus Miller
Ms. Sarah Miller
Ms. Andrea Milliser
Mr. John Mollencupp
Mr. Craig Moore
Ms. Courtney Nafziger
Ms. Kami Newcomer

Ms. R. Grace Overmyer
Ms. Hannah Overmyer
Mr. Joshua A. Overmyer
Ms. Lanae M. Peter
Ms. Maci Polk
Mr. John Prathaftakis
Ms. Nicole Prathaftakis
Ms. Bridget Rans
Mr. Christopher Rausch
Ms. Jessicka Rensberger
Ms. Anna Roe
Ms. Anne Rosswurm
Ms. Marie C. Rosswurm
Ms. Leigh Anne Runkle
Mr. Nathan Sawyer
Ms. Alisha Sells
Ms. Kristy Sheets
Ms. Katie J. Spencer
Mr. Ryan Spencer
Ms. Lindsey Steele
Mr. Ryan Sumpter
Ms. Arica Sumpter
Mr. Kyle Surface
Mr. Reid Surface
Mr. Justin Tammany
Mr. Charles Tate
Ms. Kaitlyn Thomas
Mr. Larry S. Tugmon
Ms. Amy Van Duyne
Mr. Anthony Van Duyne
Ms. Nicole Wakeland
Ms. Nicole Waltz
Ms. Nicole Warder
Ms. Kandy Weller
Ms. Kara Whistler
Mr. Derrick Whitbeck
Mr. Austin White
Ms. Hannah Wilson
Mr. Zachary Wyatt
Ms. Brenda Yocum

Amanda Drudge Scholarship and Missions Fund

Ms. Brandi L. Alspach
Mr. Ryan Blocher
Ms. Amanda Bowen
Mr. Todd Bowen
Ms. Rae Ann Burns
Ms. Stephanie Buss
Mr. Josh Chester
Ms. Letitia Clauson
Ms. Maryann Clemons
Ms. Ashley Cook
Ms. Amanda Corn
Ms. Darlene Divine
Ms. Lynette Feldman
Mr. Kyle Felke
Mr. Wesley Gearhart
Mr. Keith Hanson
Mr. Kenneth Hanson

Ms. Rebecca Hanson
Mr. Jason Harrold
Ms. Amy Heishman
Ms. Emily Jackson
Ms. Dana E. Kreamer
Mr. Nathan Kreamer
Mr. Dusty Linn
Ms. Megan McFadden
Ms. Celeste Mikesell
Ms. Julie L. Olson
Ms. Hannah Overmyer
Ms. Bethany Parson
Ms. Cassie Perkins
Ms. Lanae M. Peter
Ms. Holly Pletcher
Ms. Gail Rathbun
Mr. Aaron Robbins

Ms. Amy Runkle
Ms. Leigh Anne Runkle
Ms. Brooke Sarver
Mr. Spencer A. Schipper
Ms. Stephanie Schwenk
Mr. Eric Serrano
Mr. Drew Shafer
Mr. Micah Sibert
Mr. Ryan Spencer
Mr. Justin Tammany
Mr. Ben Vanlaningham
Ms. Allison Weaver
Ms. Erin Weaver
Mr. Justin Weaver
Ms. Amy Wideman
Ms. Catherine E. Yoder

Fulton County Scholarship Awards... continued

Simon Deeb Scholarship

Mr. Gregory C. Miller
Mr. Joshua A. Overmyer

Jayne Ann Good Memorial Scholarship

Ms. Brandi Blackburn
Ms. Amy Bowers
Ms. Tera Knapp
Ms. Lanae M. Peter

Harold E. and Neva Funk Mikesell Scholarship Fund

Mr. James J. Bauman
Ms. Linda J. Bauman
Mr. Alex Chesser
Ms. Sarah E. Eiler
Ms. Ashley K. French
Ms. Leslie M. Good
Ms. Lindsay K. Smith
Ms. Sarah Steinmeyer
Mr. Brent Thomas

Stephen Fellers Memorial Scholarship

Ms. Kasi M. Kimmel

Elmer Harris and Beulah P. Harris Scholarship

Mr. Daniel J. Bixby

Ginger Miller Higher Education Scholarship

Ms. Angela K. Madeford
Ms. Angela M. Miller
Mr. Cory Zent

George M. Schwenk Memorial Scholarship

Mr. Gregory C. Miller

Frounfelter Scholarship Fund

Mr. Adam J. Albright
Ms. Kasi M. Kimmel
Mr. Brett A. Miller
Ms. Leigh Anne Runkle

Steven Bruce Mattice Memorial Scholarship

Ms. Ashley N. Rigney

Rochester High School Scholarship

Mr. Joshua W. Martin

Howard M. Utter and Helen Pike Utter Scholarship

Mr. Tyler D. Kottkamp

Scholarship Funds held by Fulton County but administered by the agency

Akron Lions Club – Kenny Bright Scholarship
First Presbyterian Church Scholarship
The R. Wayne and Virginia Bryant Smith Scholarship – administered by Manchester College



Grace Waechter and Tami Murphy at the Fulton County Scholarship reception

“Learning is not attained by chance; it must be sought for with ardor and attended to with diligence”

Abigail Adams (1744 - 1818)

Miami County Scholarship Awards

The Claude S. and Marie M. Berger Foundation

Ms. Brandi L. Alspach
Ms. Sherise Lou Ellen Denny
Ms. Lynette Feldman
Mr. Philip J. Jackson
Ms. Julie L. Olson
Ms. Shannon C. Rogers
Ms. Hayley Withers

Velma Derbyshire Art Scholarship

Ms. Kelly L. Creech
Mr. Thomas G. Scheiter

John V. & Joyce L. Lewis Scholarship

Ms. Lindsay N. Hull

Scholarship Funds held by Miami County but administered by the agency

Miami County 4-H Memorial Scholarship
Circus City Festival, Inc. Scholarship
Rotary Club of Peru Scholarship

Marilyn Coppernoll Memorial Scholarship

Ms. Krista L. Sodervick

Randy Hughes Memorial Scholarship

Ms. Jena L. Hartley
Ms. Amanda N. Reed

Miami County Services Committee Scholarship

Ms. Elisha N. Hudson
Ms. Lauren S. Hull
Ms. Lindsay N. Hull

Alice Moon Scholarship

Ms. Shannon L. McCord
Mr. Aaron M. Thompson

Miami County Historical Society - Richardson Scholarship

Ms. Heather M. Gebhart

James R. & Betty J. Davis Scholarship

Ms. Heather M. McNabney

J & J Scholarship

Ms. Jewel K. Binkerd
Ms. Chelsea L. Boyll
Mr. Adam J. Brehmer
Mr. Brandon Brown
Ms. Desiree' A. Cook
Ms. Julie I. Fenton
Ms. Amy E. Hopper
Ms. Elisha N. Hudson
Ms. Courtney B. Kennedy
Ms. Heather M. McNabney
Mr. Michael W. Nowling
Ms. Laura Rush
Ms. Karlie M. Saine
Ms. Katrina E. Sennett
Ms. Laura K. Sipe
Ms. Sarah J. Stapleton
Ms. Alaina M. Townsend

Starke County Scholarship Awards

Brooklyn A. Boo Memorial Scholarship

Ms. Jacalynn M. Surma

Helen & Ware Edgar Scholarship

Mr. Joshua E. Noble

Richard H. Gumz Agricultural Scholarship

Ms. Jennifer L. Bales

Ed Hasnerl/WKVI Scholarship Fund

Ms. Erin Kroft

Clarence Lawrence Memorial Scholarship

Mr. Eric D. Wappel

Starke Memorial Hospital and Medical Staff Health Scholarship

Ms. Julie A. Danford
Mr. Michael Matsey

Forrest and Helen Whitson Scholarship

Ms. Hayley Wood

Robert O. and Doris E. Winters Scholarship

Mr. Ryan T. Morgan

Scholarship Funds held by Starke County but administered by the agency

Ancilla/SCILL Fund
Starke County Scholarship Found.
Railroad Twp. /San Pierre Alumni Scholarship
Catherine & Frank Alan Fund

Fulton County Donors 2003

Mr. and Mrs. Donald Abbott
 Advanced Guttering Plus
 AFLAC - Ms. Angela Condon
 Akron Church of God
 Akron Country Kitchen
 American Legion Aux #81
 Aubbeenaubee Twp Improvement Corp.
 B & B Men's Wear
 Bailey's Hardware
 Dr. & Mrs. Ralph E. Bailey
 Mr. William A. Bailey & Ms. Malinda Gentry
 Mr. & Mrs. Thomas J. Bair
 Mr. & Mrs. Christopher Baker
 Mr. Jerry Baker
 Mr. & Mrs. Dean Baker
 Ms. Lois M. Baker
 Mr. & Mrs. Bart Ball
 Mr. & Mrs. Earl W. Bangel
 Mr. Chloris Barkman
 Mr. & Mrs. Stacy Barkman
 Dr. David Barts D.D.S.
 Mr. & Mrs. Robert P. Bauer
 Mr. & Mrs. Donald Bauman & Family
 Mr. & Mrs. Frederick H. Bauman Sr.
 Mr. & Mrs. E. Parke Baxter
 Beacon Credit Union
 Mr. Richard Bean
 Mr. & Mrs. Rick Beaulieu
 Dr. Daniel Belcher & Dr. Mary Wermuth
 Mr. & Mrs. Richard E. Belcher
 Ms. Joanne Newcomb Bendall
 Mr. & Mrs. Virgil Biddinger
 Mr. & Mrs. Troy D. Bixler
 Blackburn Tire Shop Inc.
 Mrs. Mabel Blacketor
 Bloomin' Corner
 Mr. & Mrs. Glen Bode
 Mr. & Mrs. Wayne Bode
 Mr. & Mrs. Fred Bohm
 Ms. Sheila Bohm
 Rev. Thomas Bohr
 Mr. & Mrs. Gordon Bohs
 Mr. & Mrs. Jeffery Bonnell
 Mrs. Cynthia M. Border
 Ms. Susan E. Bosch
 Mr. & Mrs. Joe Bowers
 Mr. & Mrs. Robert R. Bridge
 Mr. & Mrs. Brian A. Brockey
 Mr. & Mrs. Robert S. Broda
 Mr. & Mrs. Daniel A. Brower
 Ms. Engrid E. Brown
 Mr. & Mrs. Joe Brown
 Mr. & Mrs. John Brown
 Mr. Kenneth Brown
 Mr. & Mrs. Marty Burns and family
 C & C Embroidery
 Ms. Cynthia Caldwell
 Ms. Carol Calloway
 Cancer Treatment Centers of America
 Mr. & Mrs. Robert S. Cannedy Jr.
 Mr. & Mrs. Robert S. Cannedy Sr.
 Mr. & Mrs. Stephen R. Cannedy
 Mr. Francis Carlson

Mr. & Mrs. Keith Carlson
 Mr. & Mrs. Gregory M. Carr
 Mr. & Mrs. Phillip Carr
 Mrs. Teri L. Carr
 Mr. & Mrs. John L. Cash
 Caston High School Cheerleaders
 Ms. Susan Clark
 Mrs. Annabelle Clary
 Class of 1964 - Rochester High School
 Mr. & Mrs. David Clauson
 Mr. & Mrs. Ron Clauson
 Mr. & Mrs. Richard R. Cole
 Mr. & Mrs. James L. Collins
 Mr. & Mrs. Don Cook
 Cornerstone Christian Bookstore
 Mr. & Mrs. Milton E. Cox
 Craig Welding & Manufacturing, Inc.
 Craft Crossing
 Mr. & Mrs. Joe Crill
 Mr. & Mrs. Larry Cripe
 Mr. Lavonne Crissinger
 Mr. & Mrs. Frank T. Crossland
 Mr. Walter Scott Cumberland
 Curves of Rochester
 Mr. Daniel B. Daniels CO-TTEE
 Mrs. Zanna Daniels
 Mr. & Mrs. Ben B. Daulton
 Dean Foods
 Wayne DeHaven Family
 Ms. Georgia Ann Delp-Day
 Mike Denney Family
 Mr. & Mrs. Ted Denton
 Mr. & Mrs. Donald G. Dillavou
 Mr. & Mrs. Jim Downhour Jr.
 Ms. Cheryl Downs
 Mr. & Mrs. David H. Doyle
 Mr. & Mrs. James Drews
 Mr. & Mrs. Charles Drudge
 Ms. Peggy Durkes
 Mr. Thomas R. Dyer
 Ms. Cheryl Easterday
 Ms. Katherine L. Easterday
 Ms. Sonja J. Easterday, Trust
 Ms. Mary Ann Eckhardt
 Egolf Auto LLC
 Mr. Braxton Eikenberry
 Mr. & Mrs. Timothy J. Eizinger
 Mr. & Mrs. Dennis Eller
 Mr. & Mrs. David Ewick
 Mr. & Mrs. Edward J. Fansler
 Fashionette Salon
 Fine Things
 Mr. Charlie Fear
 First Federal Savings Bank
 Mr. & Mrs. James E. Fisher
 Mr. & Mrs. Roy L. Fisher
 Mr. & Mrs. Charles W. Fowler
 Fretz Abstract Company
 Dr. & Mrs. James Fritts
 Dr. James Fritts. DDS
 Mrs. Marilyn Fritts
 Dr. & Mrs. D.J. Frounfelter
 Mr. & Mrs. Kenneth W. Fuller

Ms. Leona J. Fuller
 Fulton Co. 4-H Council Beef Committee
 Fulton Co. Area Human Resource Assn.
 Fulton Co. Boys & Girls Club, Inc.
 Fulton County Public Library Employees
 Fulton County Wellness Center
 Fulton Economic Development Corp.
 Fulton-Marshall County Co-op
 Mr. & Mrs. Mike Furnivall
 Mr. & Mrs. David C. Gamel
 Gast Heating and Cooling, Inc.
 Ms. Mary Jane Gearhart
 Mr. Carl Giffen
 Mr. & Mrs. Michael L. Gillig
 Gaerte Engines
 Going Places Travel
 Ms. Jeri Good
 Mr. & Mrs. Jon D. Good
 Ms. Joyce Good
 Mr. Junior D. Good
 Good-To-Go
 Mr. & Mrs. Robert M. Grandstaff
 Mr. & Mrs. John Gray
 Green Oak Antiques
 Mr. & Mrs. Donald R. Groenleer
 Mr. Donald R. Groenleer
 The Hair Place
 Mr. & Mrs. Ronald Hamman
 Dr. & Mrs. Mark S. Harris
 Ms. Marilyn Hartzler
 Mr. Randy Hawk
 Mr. & Mrs. Robert Haworth
 H. Ray Hazen D.D.S.
 Mr. & Mrs. Mark Heishman
 Mr. & Mrs. Paul Helstern
 Henry Township Volunteer Fire Depart.
 Mr. & Mrs. David Heyde
 Mr. & Mrs. James W. Heyde
 Hoffman Quality Graphics
 Mrs. J. Frederick Hoffman
 Mr. & Mrs. Howard Hoffman
 Mr. & Mrs. James L. Hoffman
 Mr. & Mrs. Monte Hoffman
 Mr. & Mrs. Robert A. Hoffman
 Mr. Toby L. Hoffman
 Ms. Carol Joy Holloway
 Mr. & Mrs. Thomas Holloway
 Mrs. Patricia M. Hoover
 Mr. & Mrs. Robert D. Hoppes
 Mr. & Mrs. Arnold Horn
 Ms. Maria J. Horvath
 House of Decor
 Ms. Ilene D. Howard
 Mr. & Mrs. Larry J. Howdeshell
 Mr. & Mrs. John W. Howkinson
 Mr. & Mrs. W. Todd Hudkins
 Mr. & Mrs. Jeff Hunter
 Independent Colleges of Indiana, Inc.

Fulton County Donors continued....

Indiana Child Care Fund, Inc.
 Indiana Lawrence Bank
 Insurance 1 Services, Inc.
 Mr. Jeffrey J. Irwin
 Mr. & Mrs. Larry T. Jamerson
 Jennings Insurance Agency, Inc.
 Mr. & Mrs. Dan Johnson
 Mrs. Terri Johnson
 Mr. & Mrs. Paul Johnson
 Ms. Chloeann Jones
 Kappa, Kappa, Kappa, Inc.
 Mr. & Mrs. Floyd T. Kelly
 Mr. Sean Kelly
 Mr. Mike Kenny
 Kewanna Metal Specialists
 Mr. & Mrs. Nate Kimmel
 Kiwanis Club
 Ms. Sandy Kline
 Dr. & Mrs. Robert J. Klitzman
 Mr. & Mrs. Kenneth A. Kneifel
 Mr. & Mrs. Gene Koch
 Ms. Josephine Krom
 Mr. & Mrs. Ronald L. Kuhn
 Lake City Bank
 Mr. & Mrs. Mikel Large
 Mr. Michael Edward Lefebvre
 Ms. Marnie Leininger
 Mr. & Mrs. Randall Leininger
 Lilly Endowment Inc.
 Little Lambs Day Care Ministry
 Mr. John N. Little
 Mr. & Mrs. James R. Loebig
 Mr. & Mrs. Thomas J. Long
 Manchester College
 Manitou Realty, Inc.
 Ms. Charlotte A. Mathews
 Mr. & Mrs. Bruce E. Mattice
 Mr. John H. McCarter
 Mr. & Mrs. Phil McCarter
 Mr. Daniel P. McCarthy & Ms.
 Susie Marvel
 Mr. & Mrs. Bob McGriff
 Mr. & Mrs. John McKee
 Mrs. Letty J. Mckee
 Mr. & Mrs. Bill McMillen
 Mr. & Mrs. Gregory McMillen
 Mr. & Mrs. Steven McNutt
 Mr. & Mrs. Harold Medsker
 Mr. & Mrs. Mark Melton
 Mr. & Mrs. Bob Metzger
 Mike Anderson Chrysler, Dodge,
 Jeep, Inc.
 Dr. & Mrs. Charles Miller
 Mrs. Grace Miller
 Ms. Wilma Miltonberger
 Mr. & Mrs. James Mitterling
 Judge & Mrs. Douglas Morton
 Mr. & Mrs. Sonney Mosley
 Mr. & Mrs. James H. Mulligan
 Mr. & Mrs. G. Larry Murfitt
 Mr. & Mrs. Larry Murhling
 Mr. & Mrs. Stanley Musgrave
 Mr. & Mrs. Thomas J. Mutchler

Mr. & Mrs. Joel Myers
 Mr. Brian Nelson
 Ms. Genavee Nelson
 Mr. Kenneth A. Nelson
 Mr. & Mrs. Lance Nelson
 Mr. & Mrs. William Newton
 Mr. & Mrs. Christopher M.
 Nichter
 Olive Branch Church of God
 Mr. & Mrs. Ron Opplé
 Optimist Club of Rochester
 Mr. Ned Overmyer
 Mr. & Mrs. Jack Overmyer
 Park Way Body Shop, Inc.
 Partners in Education
 Ms. Juanita M. Paulus
 Peterson & Waggoner, LLP
 Mr. & Mrs. Barry Peterson
 Mr. & Mrs. Robert E. Peterson
 Phil Daulton Liquors
 Pike Lumber Company, Inc.
 Ms. Jeanette B. Pitt
 Pocock Auctioneering
 Mr. & Mrs. Charles Pocock. Sr.
 Mr. & Mrs. George E. Pollock III
 & Family
 Mr. Brian Potter
 Mr. & Mrs. Brian Potter
 Mr. & Mrs. Richard Powell
 Mrs. Tami Powell
 Mr. & Mrs. David A. Randall
 Mr. & Mrs. Stephen J. Rans
 Ms. Virginia L. Rauschke
 Mrs. Laura L. Reese
 Mr. & Mrs. David W. Reid
 Republic First National Corp.
 Ms. Amy Ricci
 Rita's Hair Resort
 Mr. & Mrs. Kenneth Roberds
 Rochester Bagel Deli Co.
 Rochester Dairy Queen—
 Terry Runkle
 Rochester Ford Lincoln Mercury
 Rochester Greenhouse
 Rochester/Lake Manitou Chamber
 of Commerce
 Rochester Meats & Deli
 Lisa Ronback M.D.-Rochester
 Orthopedics
 Rochester Parkside Skate Park
 Rochester Telephone Co., Inc.
 Rock Hollow Golf Course
 Mr. Bob Rosenbury
 Marlene Rozzi & Wayne Baldwin
 Mr. James R. Saner
 Mr. & Mrs. Jack Sawyer
 Mrs. Sandy Sawyer
 Mr. & Mrs. Andrew Schleiger
 Mr. & Mrs. Bobby Schoen
 Mrs. Liale Schwenk
 Mr. & Mrs. Tom L. Schwenk
 Scott's Food Stores
 Ms. Melanie S. Scott & Family

Ms. Lynn Seghetti
 Mr. & Mrs. Lawrence J. Seiwert
 Mrs. Heather Seno
 The Shopping Guide News
 Mr. & Mrs. Steve R. Shriver
 Mr. & Mrs. D. Porter Shultz
 Mr. & Mrs. Marc Sirken
 Dr. Julius S. Sitjar
 Smith Farm Store
 Mr. & Mrs. Everett Smith
 Ms. Patricia K. Smith
 Mr. & Mrs. Thomas L. Smith
 Mr. & Mrs. David Smith
 Mrs. Virginia Smith
 Mr. & Mrs. Ernest A. Smoker
 Mr. Ernest E. Smoker
 Ms. Margaret G. Smith
 Mr. & Mrs. James M. Snyder
 Mr. & Mrs. Richard Solano
 Mr. & Mrs. Carl Sommers
 Sonoco Products Company
 Mr. & Mrs. Gary L. Sriver
 Mr. & Mrs. Jim Straeter
 Mr. & Mrs. Dennis A. Stanton
 Mr. & Mrs. Ralph Stayton
 Jerry & R.E. Stedman
 Judge & Mrs. Wayne Steele
 Superior Sample Company
 Mr. & Mrs. James A. Swank
 Judge & Mrs. Richard L. Swartz
 Talma Graduating Class of 1963
 Rev. & Mrs. Brian J. Tammany
 Teachers Credit Union
 Mr. & Mrs. Phil Thompson
 Tinkey Agency, Inc.
 Mr. & Mrs. Merl Tinkey
 Mr. & Mrs. Robert Tobey
 Torx Employee Fund
 Mr. & Mrs. Jack Townsend
 Mr. & Mrs. Randolph L. Trier
 Dr. & Mrs. Thomas O. Troutman
 Thomas Troutman D.O. and
 H. Ray Hazen DDS
 United Way of Fulton County, Inc.
 Mr. Channing Utter
 Mr. & Mrs. Randall A. Utter
 Mr. & Mrs. Mike Vanden Bossche
 Mr. & Mrs. Richard Van Duyne
 Mr. & Mrs. Martin VanMeter
 Video Stop Superstore
 Mr. & Mrs. Ted Waggoner
 Wal-Mart Foundation-
 Rochester, IN Store
 Mr. & Mrs. John Walker
 Mr. & Mrs. Robert H. Walter Jr.
 Mr. & Mrs. Leslie Walters
 Mr. & Mrs. Lloyd Walters
 Mr. & Mrs. Tom Watkins
 Mr. & Mrs. Tom Weaver
 Wells Fargo Bank
 Ms. Penny Wentzel
 Mr. Robert White
 Mr. & Mrs. Dee Williams

Wilson Fertilizer and Grain, Inc.
 Mr. & Mrs. Tom Wilson
 Mr. & Mrs. W. S. Wilson
 Winamac Coil Spring, Inc.
 The Winning Edge
 The Wireless Foundation
 Woodlawn Hospital
 Mr. & Mrs. Terry Wynn
 Mr. & Mrs. Stanley Yake
 Dr. & Mrs. John Yarling
 Mr. & Mrs. Scott M. Zeyen
 Zimmerman Brothers
 Funeral Home

Miami County Donors 2003

Ace Aerial & Lifts LLC
 Mr. Steve Alford
 American Stationery Company, Inc.
 American Trust Federal Savings Bank
 Ms. Nancy Anderson
 Andy Ashbrook DJ Service
 Mr. & Mrs. David Anewalt
 Annie's Attic
 Arnie's Ace Hardware
 Arnold's Candies
 Arnold & Hamilton Jewelers
 Ms. Vickie Ash
 Auditor of State of Indiana
 Mr. & Mrs. Jerry Ault
 The Austin & Hayes Families
 Mr. Michael Bakehorn
 Ms. Michelle Balma
 Mr. & Mrs. Brooke R. Balsbaugh
 Mr. & Mrs. Mark Baumgartner
 Ms. Patrise Beeson
 Mr. Richard Beeson
 Below the Loft
 Ms. Erin Bennett
 Mr. & Mrs. Jim Berkshire
 Ms. Marla Berkshire
 Mr. & Mrs. Lance L. Berryman
 Ms. Yvonne H. Bertke
 Best Western Inn – Circus City
 Mr. & Mrs. John Biggs
 Billie's Homemade Pie Shoppe
 Bill's Meat Market
 Bowyer Excavating, Inc.
 Bowyer Restaurant Group LLC
 Mr. & Mrs. James Brandon
 Jamie Branyan
 Breakaway Bike Shop
 Mr. Jason Brown
 Bryan Boilers
 BTM Hardwoods, Inc
 Jules O. Buffington
 Mr. & Mrs. Alan Burke
 Caldwell Monument Company
 Mr. Tom Casper
 Mr. & Mrs. Don Cates
 Mr. & Mrs. Keith Chandler
 Ms. Sally Chester
 Mrs. Wanda Christner
 Mr. & Mrs. Bob H. Clary
 Mr. Jim Clary
 Mr. Michael Clary
 Clothing for Walls
 Mr. & Mrs. Kevin Comerford
 Mr. & Mrs. Tim Comerford
 Conner Sawmill, Inc.
 Ms. Kim Cox
 Mr. & Mrs. Glen Conner
 CVS
 DCM Monograms
 Dairy Queen
 Damon's
 Mr. Brent A. Davis
 Dawco, Inc.

Day's Sweets
 Doane-Keyes
 Doris' Drapery Boutique
 Ms. Valerie Doud
 Mr. & Mrs. Ron Douglas
 Mr. Ron Droscha
 Phebe Edington
 Mr. & Mrs. Thomas R. Edington
 Eikenberry-Eddy Funeral Service
 Eileen & Friends
 Mr. Ronald Elberger
 Mr. & Mrs. Bruce Embrey
 Mr. & Mrs. James E. Emrich
 ESPN/Mr. Dick Vitale
 Mr. Brett Farve
 Mr. Scott Fern
 Fincher Photos
 First Farmers Bank & Trust
 Ms. Gail France
 Frances Slocum Bank
 Dr. & Mrs. James Charles Frank
 Mr. & Mrs. Larry D. Frank
 Mr. & Mrs. James Fry
 Mr. & Mrs. Richard Fullmer
 Mr. & Mrs. Michael Funk
 Gallahan Oil Co., Inc.
 Mr. & Mrs. Bernard Giver
 The Jeff Gordon Foundation
 Mr. & Mrs. Stephen Gough
 Mr. & Mrs. Robert M. Grandstaff
 Grant Street Bar & Grill
 Great White Shark Enterprises, Inc.
 Thomas J. Guthrie, D.D.S., P.C.
 Dr. & Mrs. Tom Guthrie
 Mr. & Mrs. Donald R. Groenleer
 Mr. & Mrs. John R. Guyer
 Mr. Joshua Hagenow
 Harvey Hinklemeyers
 Ms. Rebecca G. Haynes
 Mr. & Mrs. Terry Heavilon
 Mr. & Mrs. Jack Hess
 Mr. Andrew Hobbs
 Hobby Lobby
 Holland Towing, LLC
 Homers Sports Bar
 Honeywell Foundation
 Ms. Joyce Ann Hughes
 Mr. & Mrs. Stephen Hull
 Mr. & Mrs. Eric D. Huneryager
 IBS Sales
 Independent Colleges of Indiana, Inc.
 Indianapolis Motor Speedway
 Mr. & Mrs. Gary Jackson
 Mr. & Mrs. Tim Jackson
 J.D. Restaurants, Inc.
 Carol Johnston
 Mrs. Terri Johnson
 Mr. & Mrs. David Jones
 Mr. & Mrs. Larry Jordan
 Mr. John Keith
 Ms. Judy Keifer
 Mr. & Mrs. Thomas A. Keith
 Mr. & Mrs. Tracy Kelly

Mr. & Mrs. Kurt J. Kiefer
 Ms. Colleen Knickerbocker
 Mr. & Mrs. Kurt Krauskopf
 La-Societe-Des-40 Hommes
 Mr. Randy Latta
 Mr. & Mrs. Brad Lawrence
 Mr. & Mrs. Ancil Eugene Lawson
 Laycock-Hughes Auctioneer Services
 Leaning Tree Golf Course
 Dr. & Mrs. Jay V. Lewis
 Lilly Endowment Inc.
 Sarah Luginbill
 Mr. Kyle Macy
 Mad-Bro Enterprises LLC
 Mr. & Mrs. John Marburger
 The Master's Potter
 Miami County Republicans
 Miami County Historical Society, Inc.
 Dr. & Mrs. Charles Miller
 Sylvia Miller
 Mr. & Mrs. Owen Mock
 Modern Foods
 Modern Graphics
 Ms. Jerilyn Monroe
 Ms. Sara Murphy
 Dr. & Mrs. Donald G. Musselman
 Neal Tire
 Nixon Newspaper Benevolent Assoc., Inc.
 Norris Insurance Agency – Amboy
 Norris Insurance Agency – Bunker Hill
 Ms. Janice Nowling
 Olson Paint & Body, Inc.
 One Hour Cleaners
 Dr. & Mrs. Curtis Orr
 Parkview United Methodist Church
 Paul-Richard, Inc. GM Center
 Paws, Inc.
 Mr. & Mrs. T. James Perkins
 Peru Music Center
 Peru Vacuum & Sewing, Carpet & Flooring
 Petals by Petty
 Mr. & Mrs. Chuck Phillips
 Max Pitts
 Mr. Patrick Polk
 The Potter's Bench
 Mr. & Mrs. Jeffrey Price
 Mr. & Mrs. Gregory A. Quin
 Red Dot Trophy Shop
 Mr. & Dr. Sam Redmon
 W.C. Redmon Co.
 Mr. & Dr. Jan Reese
 Mr. & Mrs. Doug Rice
 Dr. Melody Richardson, D.D.S.
 Ruth Riley
 Rock Industries, Inc.
 Ms. Sharon Ross
 Mr. & Mrs. James R. Rudolph
 Dr. & Mrs. John Savage
 Mr. Mike Schaub
 Mr. & Mrs. Paul D. Schoolman
 Mr. & Mrs. Ronald R. Schuckel
 Bob Schwartz Ford-Chrysler

Mr. & Mrs. John R. Schwartz
 Beth Clary-Schwier
 Shanty Malone's
 Mr. & Mrs. Kenneth W. Sharp
 The Siding
 Charles M. Simons, DDS, Inc.
 Mr. & Mrs. Terry Smith, Jr.
 Mr. & Mrs. Todd M. Smith
 Mr. Dave Sodervick
 Ms. Joleen Sodervick
 Sonic Drive-In
 Ms. Patsy A. Stackhouse
 Stevens TV & Appliances
 Stranahan-Monroe Construction Co Inc.
 Mr. & Mrs. Phillip M. Strand
 Mr. Larry Stratmeier
 Ms. Marilyn Stratmeier
 Ms. Gloria Summers
 Swingsets, Inc.
 Terrie & Co. Hair & Nail Studio
 Touloukian Supply
 United Way of Miami County, Inc
 Victoria's Flowers & Gifts
 Video Stop East
 Mr. & Mrs. Jason Wagoner
 Mr. & Mrs. Wm. R. Wagoner
 Mr. & Mrs. Jim Walker
 Mr. Tom Watson
 Mr. & Mrs. Max Weaver
 Webbs Hallmark Shop
 Webster's Florist
 Mr. & Mrs. Tom Webster
 Mr. David Weeks
 Wells Fargo Bank
 Whitney Dolls & Crafts
 Mr. & Mrs. Arch L. Wiltshire
 Mr. & Mrs. Stephen P. Wolfe
 Mr. Walter Woodhams
 Mr. Tiger Woods
 Ms. Marilyn Wagner
 YMCA
 Mr. & Mrs. Jim Yates
 Yesterday's Elegance
 Dr. & Mrs. David P. Zandi
 David P. Zandi, DDS
 Mr. & Mrs. Jeff Zimmerman
 Richard D. Zimmerman, DDS MS

Starke County Donors 2003

Mr & Mrs Paul L. Altman
Mrs. Nancy Barker
Mr. & Mrs. Bing Bassing
Mr. Fred A. Bennett
Mr. & Mrs. Dennis W. Beville
Mrs. June Binkley
Mr. & Mrs. David E. Cook
Mrs. Carole Craigmile
Mr. & Mrs. Paul Croyle
Mrs. Alma Jean Davis
Mr. & Mrs. Bill Davis
Ms. Jennifer M. Davis
Mr. & Mrs. Randall Denney
Drews Place of Coldwater
Mr. & Mrs. James Drews
Mr. Edward A. Ebner
Mr. & Mrs. Keith Ezra
First National Bank of Monterey
Mr. & Mrs. Herb Freeman
Mr. & Mrs. John W. Frett
Mr. & Mrs. Robert M. Grandstaff
Mr. & Mrs. Donald R. Groenleer
Mr. & Mrs. LeRoy Gudeman
Mrs. Cherry Gumz
Mr. & Mrs. Daniel E. Gumz
Mr. & Mrs. Jerome Gumz
Mr. & Mrs. Ralph P. Harbison
Mr. James Hardesty

Mr. & Mrs. Michael H. Haugh
Hoosier Valley Railroad Museum
HOSPICE Walk
Independent Colleges of Indiana, Inc.
Mr. & Mrs. Henry Jelinek
Mrs. Terri Johnson
Mrs. Etha L. Kallin
Mr. Jeffrey S. Kehler
Mr. & Mrs. James Kersting
Mr. & Mrs. Robert L. Kinerk
Mr. Stephen R. Klipfel
Mr. & Mrs. Frederick E. Kuhmichel
Mrs. Daisy May Lain
Lilly Endowment Inc.
Mrs. Betty J. Lucas
Mr. & Mrs. Martin Lucas
Mrs. Marlene Marks
Judge & Mrs. David Matsey
Mr. Philip G. McIntosh
Mr. & Mrs. Robert W. McKee
Mr. & Mrs. Marvin D. McLaughlin
Mr. & Mrs. Jim Menis Jr.
Northern Indiana Technologies
Dr. & Mrs. Charles Miller
NJSP High School Alumni Assn
Mr. & Mrs. John L. Norem
Mr. & Mrs. David Olinghouse
Mrs. Kathleen Paras

Mr. Joseph H. Passauer
Mr. & Mrs. Robert Patterson
Rannells Funeral Home
Mr. William B. Retseck
Mr. Ralph R. Roseman Family
Mr. & Mrs. Stephen E. Scamerhorn Jr.
Mr. Bruno Seghetti
Mr. & Mrs. Leo Seghetti
Mr. & Mrs. Jeffrey Shane
Mr. Matthew S. Small
Mrs. Helen Smith
Sprint
Starke Memorial Hospital
Starke Memorial Hospital Medical Staff
Starke United, Inc.
Mr. & Mrs. Mat Swanson
Ms. Majorie L. Thode
Mr. & Mrs. Edward Troike
Ms. Joyce L. Verhagen
Mrs. Arlowa S. Vorm
Mr. & Mrs. Fred Vorm
Mr. Fred Vorm
Mr. George V. Wamsley
Mr. John W. Whitson
Mrs. Doris Winters
WKVI Radio Station

*“I expect to pass through this world
but once; any good thing therefore that
I can do, or any kindness that I can
show to any fellow creature, let me do
it now; let me not defer or neglect it,
for I shall not pass this way again. “*

Ettiene De Grellet

Northern Indiana Community Foundation, Inc. Balance Sheet

ASSETS:	2003	2002
Current Assets		
Cash and cash equivalents	\$ 1,308,957	\$ 2,081,544
Interest and dividend receivable	15,744	36,717
Grants receivable	4,840	892,602
Receivable from Pulaski County	55,842	61,282
Investments	<u>11,101,026</u>	<u>8,580,691</u>
Total Current Assets	\$12,486,409	\$11,652,836
Other Assets		
Beneficial interest in charitable remainder trust	124,454	105,706
Real Estate Interest	119,000	119,000
Fixed Assets		
Building and land	119,400	119,400
Office equipment	88,071	81,900
Accumulated depreciation	(80,670)	(59,298)
Total Assets	<u>\$12,856,664</u>	<u>\$12,019,544</u>
LIABILITIES AND NET ASSETS:		
Liabilities		
Accounts payable and accrued expenses	\$ 6,644	\$ 19,037
Grants payable	86,497	113,097
Payable to Pulaski County (Phase V)		446,395
Payable to Cass County	47,081	47,081
Assets held for agencies	829,692	656,130
Lilly Endowment Community Scholarship payable	<u>670,440</u>	<u>1,006,414</u>
Total Liabilities	\$ 1,640,354	\$ 2,288,154
Net Assets		
Unrestricted	4,144,675	3,061,896
Temporarily restricted	492,612	211,992
Permanently restricted	<u>6,579,023</u>	<u>6,457,502</u>
Total Net Assets	<u>\$11,216,310</u>	<u>\$9,731,390</u>
Total Liabilities and Net Assets	<u>\$12,856,664</u>	<u>\$12,019,544</u>

Audited financial statements are available on the website or upon request

Administrative and Local Staff

NICF Administrative Staff

Terri Johnson
Executive Director

Chris Gleim
*Program/Scholarship
Coordinator*

Sandy Grandstaff
Administrative Assistant

Tami Murphy
Administrative Assistant

Local County Staff

Teri Carr
Fulton Assoc. Director

Bernard Giver
Miami Assoc. Director

Corinne Becknell Lucas
Starke Office Admin.



Tami Murphy Sandy Grandstaff Chris Gleim Bernard Giver Terri Johnson Teri Carr Corinne Lucas



NICF Board and staff retreat at the Shore Club at Bass Lake.

The NICF board takes great care in continuing their education on fund management and donor relations.

The Northern Indiana Community Foundation, Inc.
P.O. Box 807, 800 Main Street
Rochester, IN 46975
574.223.2227 | Toll Free 877.432.6423
Fax 574.224.3709 | <http://nicf.org>

